

REVISIONS				
REV.	ECN NO.	DESCRIPTION	BY	DATE

CEILING SUPPORT (4) PRE-ASSEMBLED
FACTORY PRESET FOR 5/8" CEILING THICKNESS

#8 HARDWARE
(INCLUDED)

4.55

END FRAME (2)

CENTER BRACE

SIDE FRAME (2)

1/4-20 HARDWARE
(INCLUDED)

DETAIL B
SCALE 1 : 2.5

DETAIL A
SCALE 1 : 2.5

#10 HARDWARE
(INCLUDED)

ASSEMBLE END FRAME TABS
OUTSIDE OF SIDE FRAMES
ALIGN WITH HOLES

INSTALL FRAME ASSEMBLY
(SEE NOTE, SHEET 2)

This document contains information that is privileged, confidential or otherwise protected from use and disclosure. You are hereby notified that any review, disclosure, copying, dissemination or taking of any action in reliance on its contents or other use is strictly prohibited. This document and its contents are confidential proprietary information of Kenall Manufacturing Company.

UNLESS OTHERWISE SPECIFIED DIMENSIONS ARE IN INCHES TOLERANCES ARE:		
FRACTIONS	DECIMALS	ANGLES
--	.XXX ± .015	± 1/2°
MATERIAL:		CAD GENERATED DRAWING, DO NOT MANUALLY UPDATE
N/A		DRAWN AND APPROVED BY
FINISH:		DATE
N/A		DLM 4/7/2014
SCALE: --		SCALE: --
DO NOT SCALE DRAWING		DO NOT SCALE DRAWING

KENALL
1020 Lakeside Drive Gurnee Illinois 60031

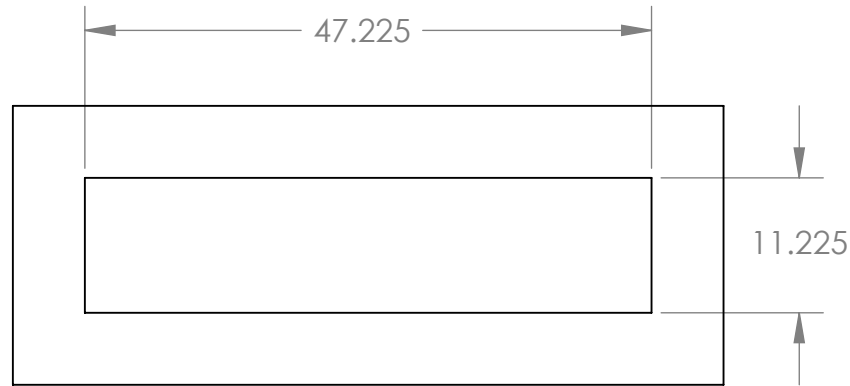
INSTR; INSTALL FRM ASSY
M4SED114\CSEDX14

F-5331

SHT: 1 REV. 0
OF: 2

NOTE: INSTALL FRAME CAN BE PRE-ASSEMBLED AND INSERTED FROM ROOM SIDE IF SUFFICIENT OVERHEAD PLENUM CLEARANCE EXISTS.

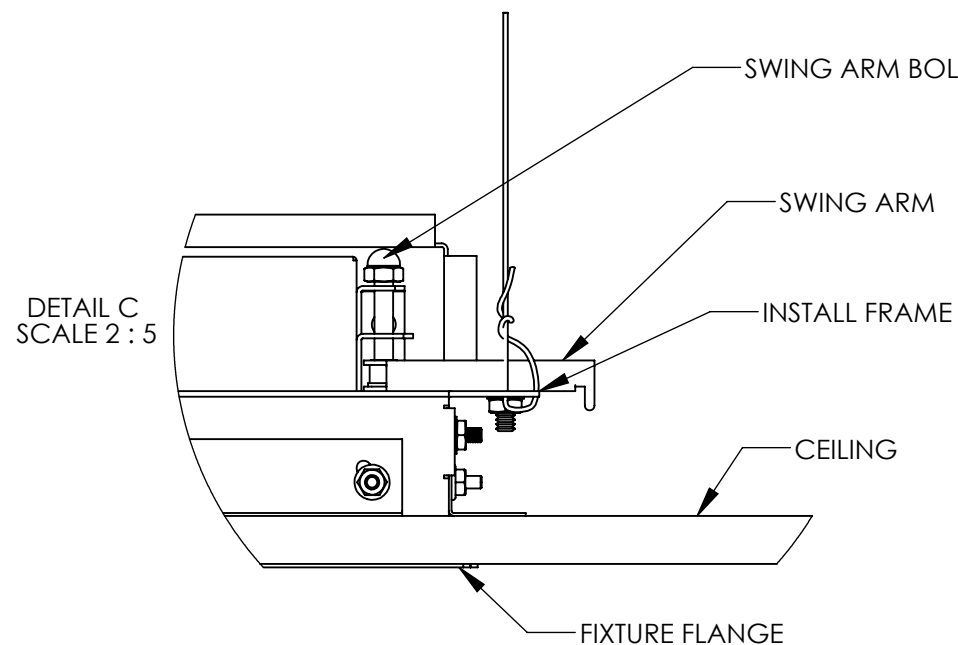
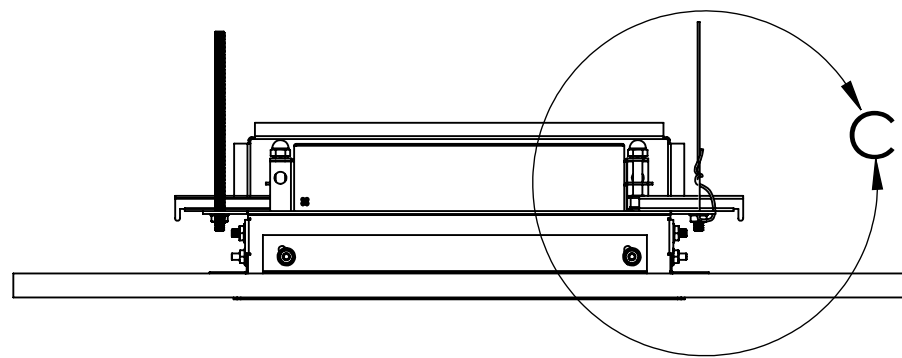
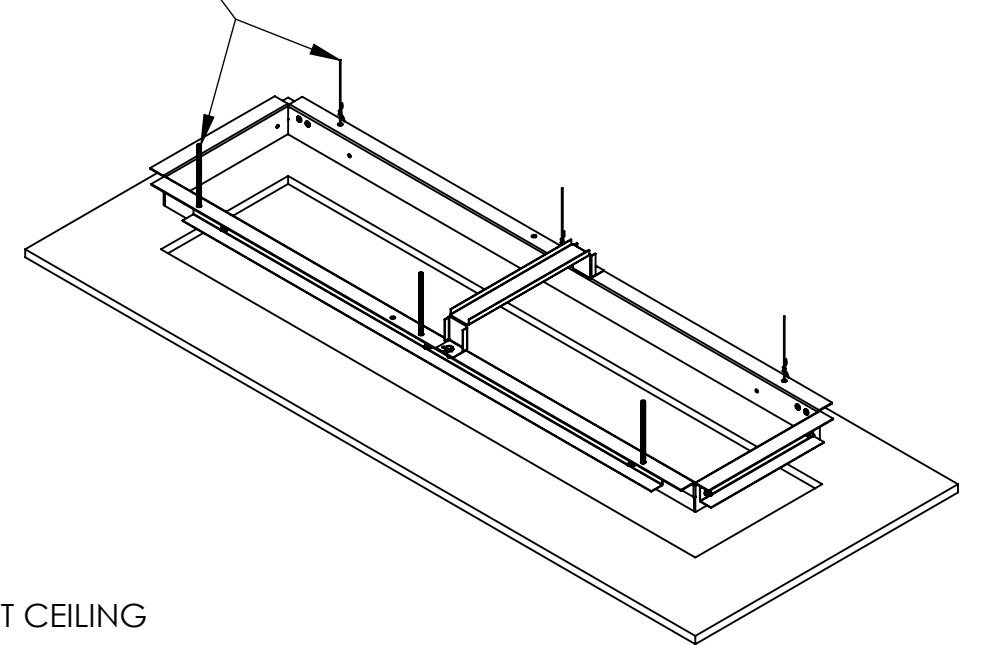
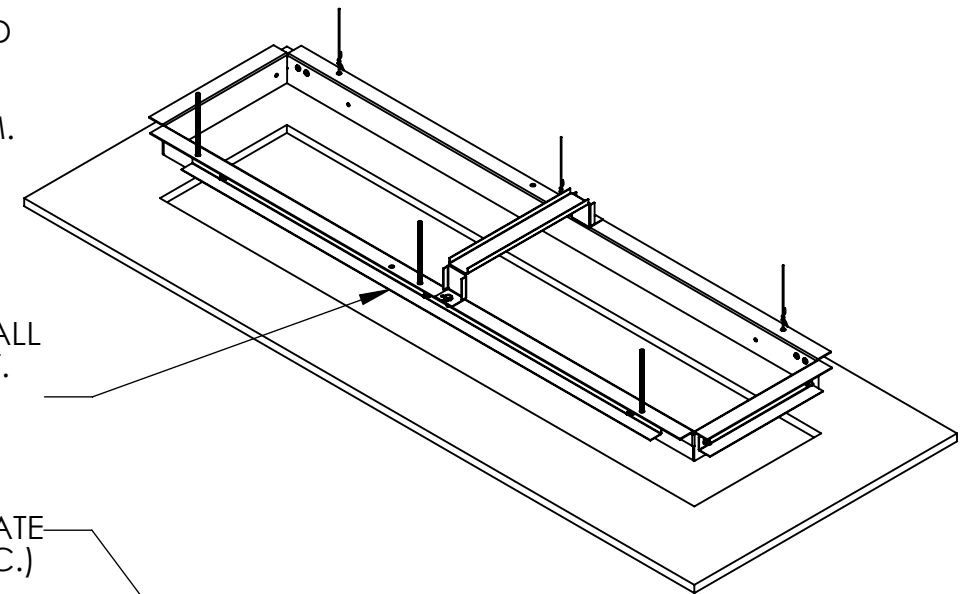
RECOMMENDED CEILING CUTOUT



IF PLENUM ACCESS IS AVAILABLE, PRE-ASSEMBLE INSTALL FRAME, AND LOWER INTO CEILING CUTOUT.
IF INSTALL FRAME IS TO BE INSTALLED FROM ROOM SIDE, AND INSUFFICIENT OVERHEAD PLENUM CLEARANCE EXISTS, LIFT END FRAMES, SIDE FRAMES AND CENTER BRACE INTO CEILING CUTOUT, AND ASSEMBLE TOGETHER WITHIN PLENUM.

ADJUST CEILING SUPPORTS (4) UNTIL BOTTOM OF INSTALL FRAME IS FLUSH WITH ROOM SIDE OF CEILING CUTOUT. CEILING THICKNESS RANGE : 1/2" TO 3/4".

SECURE FRAME TO SUPERSTRUCTURE USING METHOD APPROPRIATE FOR THE INSTALLATION (E.G., THREADED ROD, HANGER WIRE ETC.) SUPPORTING METHOD AND HARDWARE BY OTHERS



- RAISE FIXTURE INTO INSTALL FRAME
- TURN SWING ARM BOLTS (4) CLOCKWISE TO DEPLOY SWING ARMS AND ENGAGE INSTALL FRAME
- CONTINUE TURNING SWING ARM BOLTS CLOCKWISE UNTIL FIXTURE IS FIRMLY AND EVENLY SEATED AGAINST CEILING

<p>This document contains information that is privileged, confidential or otherwise protected from use and disclosure. You are hereby notified that any review, disclosure, copying, dissemination or taking of any action in reliance on its contents or other use is strictly prohibited. This document and its contents are confidential proprietary information of Kenall Manufacturing Company.</p>	<p>UNLESS OTHERWISE SPECIFIED DIMENSIONS ARE IN INCHES TOLERANCES ARE:</p>				
	<p>FRACTIONS --</p>	<p>DECIMALS .XXX±.015</p>	<p>ANGLES ±1/2°</p>	<p>1020 Lakeside Drive Gurnee Illinois 60031</p>	
	<p>MATERIAL: N/A</p>			<p>CAD GENERATED DRAWING, DO NOT MANUALLY UPDATE</p>	<p>INSTR; INSTALL FRM ASSY</p>
	<p>FINISH: N/A</p>			<p>DRAWN AND APPROVED BY: DLM</p>	<p>DATE: 4/7/2014</p>
			<p>SCALE: -- DO NOT SCALE DRAWING</p>	<p>SIZE DWG. CAD FILE No: B</p>	<p>REV. 0</p>
			<p>M4SEDI14\CSEDX14</p>		<p>SHT: 2 OF: 2</p>
			<p>F-5331</p>		