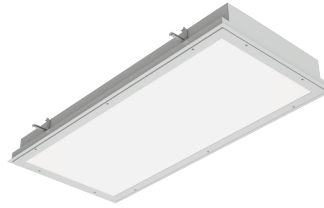


# SIMPLESEAL™

## HSEFI SERIES – LF FLANGE MOUNT – INSET DOOR

### PRODUCT FEATURES:

- » Recessed ceiling mount – flange; 1'x4', 2'x2', 2'x4'
- » One-piece inset doorframe secured to housing with aircraft cables
- » 20-gauge, hole-free one-piece cold rolled steel housing
- » Closed cell extruded silicone gasket seals doorframe to housing
- » Hazardous Location Listings include Class I, Division 2, Groups A, B, C, D
- » Class II Groups F and G, Division 2, Class III



### PROJECT INFORMATION

Job Name \_\_\_\_\_

Fixture Type \_\_\_\_\_

Catalog Number \_\_\_\_\_

Approved by \_\_\_\_\_

### SPECIFICATIONS

**HOUSING:** 20-gauge CRS. Hole-free seam welded construction. White TGIC polyester powder coat finish – 5-step pre-treatment. Salt spray test: 1,000 hours; Reflectance: 92%.

**HOUSING FLANGE:** 18-gauge CRS. Mitered and welded corners then spot-welded to housing.

**DOORFRAME:** 18-gauge CRS. One-piece inset construction welded corners. White TGIC polyester powder coat finish – 5-step pre-treatment. Salt spray test: 1,000 hours; Reflectance: 92%. Doorframe secured to housing with aircraft cables and (8) for 1x4, 2x2, (10) for 2x4 captive mounted Phillips head stainless steel fasteners. Doorframe Gasket: Closed cell extruded silicone gasket seals doorframe to housing.

**LENS:** .125" P12 acrylic lens sealed to doorframe with silicone sealant and secured with continuous lens retention system. Lens orientation – smooth side out.

**ELECTRICAL:** Fluorescent electronic ballasts (<10% THD). Lamps by others. See Electrical Options for additional options.

**INSTALLATION:** Adjustable swing-out mounting brackets standard.

**WARRANTY:** Limited one (1) year Kenall fluorescent warranty.

**LISTINGS:** UL and CUL Listed for Wet Location. UL certified IP65 per IEC 60598. NSF2 Splash/non-Food Zone. Meets K230 Leakage Standard for luminaire leakage in pressurized environments and FED-STD-209E/Class 100 (ISO 5) Cleanrooms. Standard Hazardous Location Listings include Class I, Division 2, Groups A, B, C, D. Class II, Groups F and G, Division 2, Class III. CCEA approved.



### ORDERING INFORMATION (Ex: HSEFI24T8-6-32-RS-2-277-2F-2H-1)

Model	Lamp Qty/Type	Ballast Type	Ballast Qty	Voltage	Doorframe Option	Housing	Lens Type	Options
<b>Model</b>		<b>Ballast Type</b>			<b>Housing/Flange Options</b>		<b>Options</b>	
<b>HSEFI14T8</b> 1'x4'		<b>RS</b> Rapid Start Electronic <10% THD			<b>2H</b> 20-Ga CRS/18-Ga CRS (STD)		<b>FS</b> Fuse & Holder	(available with 1 or 2 lamps only)
<b>HSEFI22T8</b> 2'x2'		<b>SB</b> Specified Ballast			<b>5H5</b> 20-Ga Type 304 SS/18-Ga Type 304 SS		<b>HJ</b> Sealed Wireway	
<b>HSEFI24T8</b> 2'x4'					<b>2H5</b> 20-Ga CRS/18-Ga Type 304 SS		<b>IF</b> Install Frame	
		<b>Ballast Quantity</b>			<b>PAH</b> .050" Painted Aluminum		<b>PF</b> Plaster Frame	
<b>Lamp Qty/Lamp Type</b>		<b>1</b> One					<b>RM</b> Continuous Row Mounting	
<b>1x4 – T8</b>		<b>2</b> Two			<b>Lens Type</b>		<b>TH</b> 1/2" Trade Size Threaded Hub	
<b>1-32</b> One F32T8					<b>Acrylic</b>			
<b>2-32</b> Two F32T8		<b>Voltage</b>			<b>1</b> .125" #12 Prismatic (STD)			
<b>3-32</b> Three F32T8		<b>120</b> 120 Volts			<b>T</b> .125" Clear			
		<b>277</b> 277 Volts			<b>U</b> .125" #12 Prismatic Impact Blend			
<b>2x2 – T8</b>		<b>347</b> 347 Volts			<b>Polycarbonate</b>			
<b>2-17</b> Two F17T8					<b>2</b> .125" #12 Prismatic			
<b>3-17</b> Three F17T8		<b>Doorframe Options</b>			<b>G</b> .125" Clear			
<b>4-17</b> Four F17T8		<b>2F</b> 18-Ga CRS Painted (STD)			<b>6</b> .187" #12 Prismatic			
<b>2-31U</b> Two F31T8-1.625"U		<b>AF*</b> Anodized Aluminum						
<b>3-31U</b> Three F31T8-1.625"U		<b>PAF</b> Painted Fabricated Aluminum			<b>Tempered Glass</b>			
		<b>5F</b> 20-Ga Type 304 SS Brushed			<b>TG</b> .250" Textured Tempered Glass			
<b>2x4 – T8</b>					<b>Specified Lens</b>			
<b>2-32</b> Two F32T8					<b>SL</b> Specified Lens			
<b>3-32</b> Three F32T8								
<b>4-32</b> Four F32T8								
<b>6-32</b> Six F32T8								

HAZARDOUS LOCATION T-RATINGS	
Lamp Type	Operating Temp/Temp Code
F32T8	85° C/T6
F17T8	100° C/T5
F31T8	100° C/T5



www.kenall.com | P: 800-4-Kenall | F: 262-891-9701 | 10200 55th Street Kenosha, Wisconsin 53144, USA

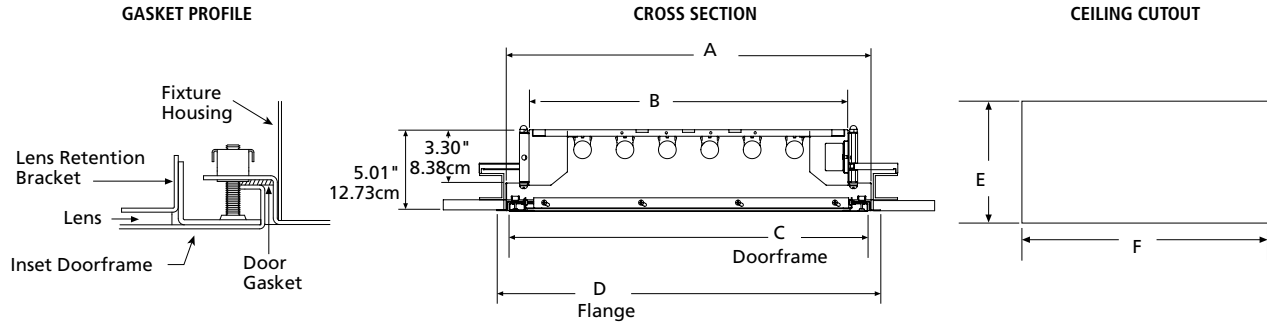
This product complies with the Buy American Act: manufactured in the United States with more than 50% of the component cost of US origin. It may be covered by patents found at www.kenall.com/patents. Content of specification sheets is subject to change; please consult www.kenall.com for current product details. ©2022 Kenall Mfg. Co.

A brand of **legrand**

# SIMPLESEAL™

## HSEFI SERIES – LF FLANGE MOUNT – INSET DOOR

### DIMENSIONAL DATA



#### DIMENSIONAL DATA (IN INCHES & CENTIMETERS)

	A	B	C	D	E	F
<b>1×4 T5</b>	12.20×46.60	9.35×46.60	11.80×46.20	13.35×47.75	12.50	46.88
<b>30.48cm×121.92cm</b>	30.99×118.36	23.75×118.36	29.97×117.35	33.91×121.29	31.75	119.08
<b>2×2 T5</b>	22.60×22.60	19.75×22.60	22.20×22.60	23.75×23.75	22.88	22.88
<b>60.96cm×60.96cm</b>	57.40×57.40	50.17×57.40	56.39×57.40	60.33×60.33	58.12	58.12
<b>2×4 T5</b>	22.60×46.60	19.75×46.60	22.20×46.20	23.75×47.75	22.88	46.88
<b>60.96cm×121.92cm</b>	57.40×118.36	50.17×118.36	56.39×117.35	60.33×121.29	58.12	119.08
<b>1×4 T8</b>	12.20×48.13	9.35×48.13	11.80×47.70	13.35×49.27	12.50	48.38
<b>30.48cm×121.92cm</b>	30.99×122.25	23.75×122.25	29.97×121.16	33.91×125.15	31.75	122.89
<b>2×2 T8</b>	22.60×24.13	19.75×24.13	22.20×25.70	23.75×25.27	22.88	24.38
<b>60.96cm×60.96cm</b>	57.40×61.29	50.17×61.29	56.39×65.28	60.33×64.19	58.12	61.93
<b>2×4 T8</b>	22.60×48.13	19.75×48.13	22.20×47.70	23.75×49.27	22.88	48.38
<b>60.96cm×121.92cm</b>	57.40×122.25	50.17×122.25	56.39×121.16	60.33×125.15	58.12	122.89

NOTE: Add .25" (.64cm) to each cut-out dimension when Install Frame (IF) or Plaster Frame (PF) Accessory is specified.

