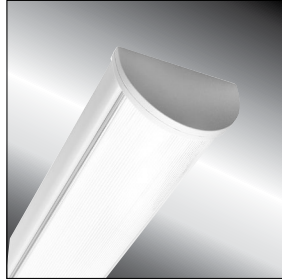


# MILLENNIUM STRETCH™

## MLHA5 SERIES using Indigo-Clean Technology – QUICK SHIP

### PRODUCT FEATURES:

- » Quick Ship ordering options ship in 5 days
- » Provides on-demand environmental disinfection via LED light
- » Single, white disinfection mode
- » Independent laboratory tested to kill harmful bacteria, including Staph\*, such as MRSA\*\*
- » Extruded and die-cast aluminum construction
- » Peace of Mind Guarantee® against breakage



### PROJECT INFORMATION

Job Name \_\_\_\_\_

Fixture Type \_\_\_\_\_

Catalog Number \_\_\_\_\_

Approved by \_\_\_\_\_

### SPECIFICATIONS:

**HOUSING:** Marine grade aluminum. Extruded body with die-cast end caps. Housing, with end caps, post assembly TGIC polyester powder coat finished – 5-step pre-treatment. See Ordering Information for available finishes.

**OPTIC:** High-impact extruded diffuser. Smooth exterior, linear prismatic interior. Nominal thickness .156". Lens securely positioned in body channels and end caps. Lens locked in place with four (4) tamper-resistant stainless steel Torx® with center pin fasteners and sealed with closed cell gaskets. Full reflector/wire cover with 92% reflectivity.

**END CAPS:** Marine grade die-cast aluminum. Conduit and "Wiremold™ ready" knockout visible only from interior of end cap.

**ELECTRICAL:** Serviceable mid-power white and 405nm Indigo LED array. Available 3700K color temperature with 3-step MacAdam variation allowance. Minimum 82 CRI standard. 120-277VAC electrical input with serviceable high power factor electronic, constant-current drivers (<10% THD, >0.90 PF). Minimum 85% driver efficiency. Standard 0-10V dimming with 1-100% range and dim-to-dark capabilities. 165µA maximum source current. Single, white disinfection mode.

**INSTALLATION:** Standard four-point mounting required for Peace of Mind Guarantee®. Suitable for installation into -30°C to 40°C ambient environments, unless otherwise noted.

**PHOTOMETRICS:** Photometry tested to the IESNA LM-79-08 standard by an ILAC/ISO17025 accredited laboratory. For additional photometric data, please go to [www.kenall.com](http://www.kenall.com).

**WARRANTY:** Limited five (5) year LED warranty. Peace of Mind Guarantee against breakage.

**LISTINGS:** Luminaire is certified to UL Standards by Intertek Testing Laboratory for Wet Location – covered ceiling mount. Corner, horizontal wall, vertical wall and pendant mount installation – Damp Location only. ETL certified IP64 in compliance with IEC 60598 – ceiling mount. ADA compliant. EPA Est. No. 99283-WI-1. Luminaire tested to an IK10 impact protection rating per IEC 60068-2-75:1997-08.

\*per independent lab report #5GS-09516076094. Contact Kenall for a copy of this report.

\*\*Antimicrobial Activity of a Continuous Visible Light Disinfection System by Rutala, et. al, ID Week 2016.



### ORDERING INFORMATION (Ex: MLHA5-48-F-MW-FA-55C37K-DCC-DV)

Model	Length	End Cap	Finish	Lens	Lamp Type	Driver Type	Voltage
<b>MLHA5</b>	<b>48</b>	<b>F</b>	<b>MW</b>	<b>FA</b>	<b>55C37K</b>	<b>DCC</b>	<b>DV</b>
	<b>Length</b> 48 4'		<b>Finish</b> MW Matte White			<b>Driver Type</b> DCC 0-10V Dimming Constant Current	
	<b>End Caps</b> F Flat		<b>Lens</b> FA Frosted DR Acrylic			<b>Voltage</b> DV 120-277 Volts, 50/60Hz	
			<b>Lamp Type</b> 55C37K 55 Watt 3700K White & Indigo LED				

Click [HERE](#) for full range of MLHA5 ordering options



www.kenall.com | P: 800-4-Kenall | F: 262-891-9700 | 10200 55th Street Kenosha, Wisconsin 53144, USA  
 This product is able to comply with the latest domestic preference legislation, such as the Buy American Act (BAA), Trade Agreement Act (TAA), Build America, Buy America Act (BABA), and others. It may be covered by patents found at [www.kenall.com/patents](http://www.kenall.com/patents). Content of specification sheets is subject to change; please consult [www.kenall.com](http://www.kenall.com) for current product details. ©2024 Kenall Mfg. Co.

A brand of **legrand**

# MILLENIUM STRETCH™

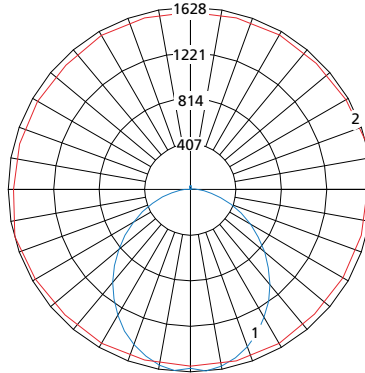
## MLHA5 SERIES using Indigo-Clean Technology – QUICK SHIP

### PERFORMANCE

Lamp Type	Initial Delivered Lumens		Input Power (W)	Drive Current (mA)	Estd. L70 LED Life (Hrs)
	@ 25°C	Efficacy (lm/W)			
55C37K	5,436	86	63	100	80,000

Displayed information above is for FA lens type. Information subject to change without notice. Visit [www.kenall.com](http://www.kenall.com) for IES files and additional information.

Model: MLHA5-48-X-MW-FA-55C37K-DCC-DV

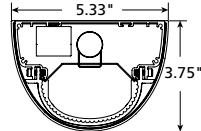


Maximum Candela = 1628 Located At Horizontal Angle = 15, Vertical Angle = 5

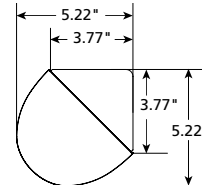
- 1 - Vertical Plane Through Horizontal Angles (15-195) (Through Max. Cd.)
- 2 - Horizontal Cone Through Vertical Angle (5) (Through Max. Cd.)

### DIMENSIONAL DATA

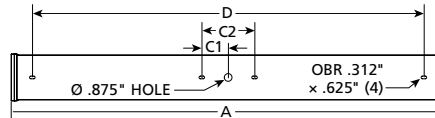
#### CROSS SECTION/DETAILS



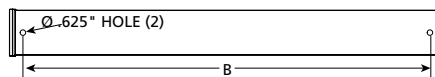
#### CORNER MOUNT BRACKET



#### SURFACE MOUNTING HOLES



#### PM OPTION



Nominal Four Foot Fixture Legend					
End Cap	A	B	C1	C2	D
F	49.31	46.25	3.00	6.00	44.48

