

STRATALUME CONNECTS™ AND STRATALUME™  
**LED** and Fluorescent Undercabinet Lighting Solutions

Task Lighting

TL



## Why Kenall for Task Lighting?

Kenall has applied 50 years of expertise in designing, developing, testing and manufacturing lighting for challenging environments. As a recognized leader in the industry, our products are designed to meet the most stringent performance standards across multiple markets. Task lighting is no exception. Our Stratalume Connects™ LED series has been enhanced with cutting-edge technology to provide even greater versatility, environmental integrity and lighting quality.

## Appropriate Light Levels for the Application

Virtually every medical, scientific, institutional and office facility has work areas where task lighting is a necessity. This need for supplementary work surface illumination is the result of shadows created by overhead storage or other light-blocking furniture components. Often, specific tasks require higher light levels than provided by the room's ambient lighting system. You can depend on Kenall for brighter work surface illumination.

## See For Yourself

Whenever you are specifying furniture-mounted task lighting for the most environmentally critical laboratory or medical facilities, the most upscale office setting, or the most visually demanding institutional project, you owe it to yourself to consider Kenall's Stratalume Connects™ and Stratalume™ linear task lighting. We encourage you to see Kenall's task lighting products for yourself, so that you will know just how remarkable a fit they are for your lighting projects.

## Table of Contents

Why Kenall for Task Lighting?	2
Applications	3
Undercabinet Lighting Features	4
Undercabinet Lighting Options	5
Stratalume Connects™ Architectural Undercabinet	6
Stratalume Connects™ Medical Undercabinet	7
Stratalume™ MRI Undercabinet	8
Stratalume™ Undercabinet	9
Lighting Calculations & Lumen Data	10
Ordering Information	11
Technology and Testing	12
Warranties	13
Kenall Market Segments	14-15



An NSF Listing denotes that the luminaire has been evaluated for corrosion resistance, cleanability and the ability of exposed material to withstand normal wear. This supports critical infection control standards established by healthcare facilities as it indicates that the luminaire is easy to sanitize.



## The Right Choice for Any Environment

We are confident you will find Kenall's dynamic family of linear task lighting versatile enough for specification in a variety of applications, as well as a strong alternative for other specification-grade downlight applications. Our products are tough enough for the most demanding environments, yet also blend well with high-aesthetic, architecturally-styled applications. Kenall's undercabinet lighting fixtures are available in LED or fluorescent lamp sources, with a variety of options. Either way, consider Kenall for undercabinet lighting that meets, and even exceeds, your diverse linear task lighting requirements across a range of applications.



Healthcare

### Healthcare

Kenall understands that having fixtures that are easy to clean in support of effective infection control is a major concern for the healthcare industry. With this in mind, Kenall is proud to introduce the first NSF rated undercabinet luminaires that not only withstand rigorous cleaning protocols, but also meet stringent cleanliness and infection control standards while delivering superior optical performance.



Education/Office/Hospitality

### Education/Office/Hospitality

Kenall's undercabinet luminaires not only meet the most stringent performance standards in the industry, but they have also been designed to blend well with architectural-styled spaces. By delivering low glare, appropriate color temperature and high performance illumination, Stratalume™ and Stratalume Connects™ can work in any space designed with aesthetics in mind.



Food Processing

### Food Processing

Whether established by the USDA, the FDA or the end user themselves, today's food processing facilities must meet some of the most stringent cleanliness standards required of any industry. Driven by the need to keep foods free of contaminants, the luminaires within the facility must support critical sanitation protocols while maintaining their sealed envelope. Kenall's undercabinet lighting is NSF2 rated ensuring the luminaires can withstand even the most rigorous cleaning protocols.



www.kenall.com | P: 800-4-Kenall | F: 262-891-9701 | 10200 55th Street Kenosha, Wisconsin 53144

This product complies with the Buy American Act: manufactured in the United States with more than 50% of the component cost of US origin. It may be covered by patents found at [www.kenall.com/patents](http://www.kenall.com/patents). Content of specification sheets is subject to change; please consult [www.kenall.com](http://www.kenall.com) for current product details.



## 4 Undercabinet Lighting Features

### Stratalume Connects™ Series

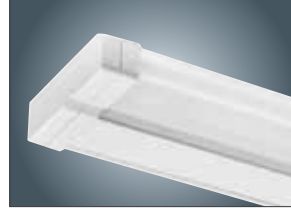


Designed with quality, versatility and reliability in mind.

Ideal for professional environments, this molded product offers durability, cleanliness and continuous row connectivity for design flexibility. Available with an NSF listing and antimicrobial finish, the series is ideal for healthcare applications that require maintenance-free, high-quality task lighting where cleaning protocols have been established to support effective infection control.



**Solid Front**  
Sharp cutoff distribution for workstations and undercabinet installations.



**Luminous Front**  
Visible source luminance creates brighter, more appealing environments.



**Options**  
Available with integral occupancy sensor, dimming ballast, convenience outlet and rocker switch.



**Continuous Row Connectivity**  
Fixtures interlock to create an installer-friendly system.



**External Mounting Feet**  
External mounting feet allow ease of installation without accessing internal compartments.



**Power Connections**  
Molded interconnects and power cordsets are available in various lengths to electrically connect fixtures.

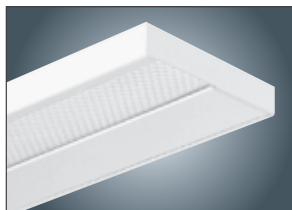


### Stratalume™ Series

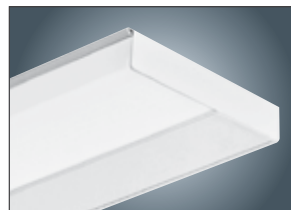


Fabricated steel construction delivers durable, long life, high performance lighting for specification grade and specialized applications.

Offering long life and durability, the Stratalume series is available in your choice of stainless steel or cold rolled steel. The stainless steel option is particularly suitable for specialized, wet location environments such as labs and food processing operations.



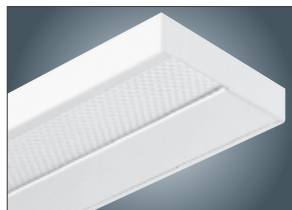
**Solid Front**  
Cutoff distribution ideal for non-soffit cabinets.



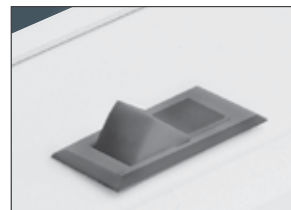
**Wraparound Front**  
Ideal under soffit cabinets for task and surrounding area lighting.



**Lens**  
DR acrylic lens lies or snaps in place for quick and easy relamping.



**Flush End Mounting**  
Flush end design for continuous, end-to-end mounting.



**Optional Rocker Switch**  
Accessible, easy-to-operate switching mechanism to activate the fixture.



**Convenience Outlet Option**  
Provides an auxiliary electrical source for supplemental equipment.



## Undercabinet Lighting Options

### Individual Or Continuous Row Connectivity

Kenall's Stratalume Connects™ provides inherent flexibility with its ability to be installed as an individual fixture or in a continuous row. The fixture is designed with electrical and mechanical interfaces that quickly and easily connect, creating continuous rows with a clean, attractive appearance.



### Custom or Standard Colors

A wide array of features and options—including custom color finishes in addition to matte white, matte black or silver—make Stratalume™ and Stratalume Connects appropriate for virtually any environment that calls for high-quality task lighting. The unobtrusive, low-profile design makes them a perfect complement to even the most elegant office architecture.



### Modular Options

Kenall offers a range of options with its undercabinet fixtures. When ordered with an occupancy sensor, the fixture is ASHRAE 90.1 compliant, providing energy- and cost-savings, and extended lamp life. Rocker switch and convenience outlet options offer enhanced flexibility.



Occupancy Sensor



Rocker Switch



Convenience Outlet



www.kenall.com | P: 800-4-Kenall | F: 262-891-9701 | 10200 55th Street Kenosha, Wisconsin 53144

This product complies with the Buy American Act: manufactured in the United States with more than 50% of the component cost of US origin. It may be covered by patents found at [www.kenall.com/patents](http://www.kenall.com/patents). Content of specification sheets is subject to change; please consult [www.kenall.com](http://www.kenall.com) for current product details.

## 6 Stratalume Connects™ Architectural Undercabinet: Featured Product

LED

Stratalume Connects™ is now updated with the latest LED technology for enhanced performance and additional energy savings. The architectural undercabinet fixture is designed to deliver the highest light levels that can be defined, measured to universally accepted standards and certified by independent testing organizations. In addition, the Stratalume Connects architectural undercabinet series (AUC) is aesthetically pleasing, making it ideal for even the most upscale architectural settings.



### Stratalume Connects AUC LED

- LED lifetime of 87,000 hrs to L70
- Extruded marine-grade aluminum housing
- Solid front DR acrylic lens
- Continuous row connectivity
- Universal voltage input 120-277VAC
- Optional occupancy sensor
- Standard dimming driver

*Also available with fluorescent lamp sources*

Nominal Size | 1.25" x 4.5"; 18", 24", 36" or 48"  
Lamp Types | LED, T5, T8, Biaxial



www.kenall.com | P: 800-4-Kenall | F: 262-891-9701 | 10200 55th Street Kenosha, Wisconsin 53144

This product complies with the Buy American Act: manufactured in the United States with more than 50% of the component cost of US origin. It may be covered by patents found at [www.kenall.com/patents](http://www.kenall.com/patents). Content of specification sheets is subject to change; please consult [www.kenall.com](http://www.kenall.com) for current product details.

## Stratalume Connects™ Medical Undercabinet: Featured Product

LED

7

Kenall's Stratalume Connects™ medical undercabinet series (MAUC) includes all the benefits of the LED architectural undercabinet luminaire, with the addition of a standard antimicrobial finish and an NSF2 rating to withstand rigorous cleaning protocols. This luminaire is designed for linear task and undercabinet lighting applications in medical environments—from secondary surgical suite areas and nurses' stations to research laboratories and medical offices.



### Stratalume Connects MAUC LED

- NSF2 listed for ease of cleanability
- Antimicrobial finish standard
- LED lifetime of 87,000 hrs to L70
- Extruded marine-grade aluminum housing
- Solid front DR acrylic lens
- Continuous row connectivity
- Universal voltage input 120-277VAC
- Optional occupancy sensor
- Standard dimming driver

*Also available with fluorescent lamp sources*

Nominal Size  
Lamp Types

1.25" x 4.5"; 18", 24", 36" or 48"  
LED, T5, T8, Biaxial



www.kenall.com | P: 800-4-Kenall | F: 262-891-9701 | 10200 55th Street Kenosha, Wisconsin 53144

This product complies with the Buy American Act: manufactured in the United States with more than 50% of the component cost of US origin. It may be covered by patents found at [www.kenall.com/patents](http://www.kenall.com/patents). Content of specification sheets is subject to change; please consult [www.kenall.com](http://www.kenall.com) for current product details.



## 8 Stratalume™ MRI Undercabinet: Featured Product

LED

Kenall's high performance Stratalume™ MRI architectural LED undercabinet series (MRIAUC) provides high quality task illumination, enabling MRI/imaging room technicians and staff to perform imaging procedures and related tasks with ease. Its non-ferrous, solid front design provides a sharp cutoff distribution, making it ideal for workstations and undercabinet installations in the MRI/imaging room. NSF listings ensure the fixture will withstand the rigorous cleaning protocols required in healthcare settings.



### Stratalume MRIAUC Series

- NSF2 listed for ease of cleanability
- Antimicrobial finish standard
- LED lifetime of 87,000 hrs to L70
- Extruded, non-ferrous, marine-grade aluminum housing with polycarbonate end caps
- Solid front DR acrylic lens; easy to clean
- Dimming capability 0-10V available
- Remote power supply provides clean power into luminaire

Nominal Size LED | 1.25" x 4.5"; 18" or 36"  
Lamp Types | LED



www.kenall.com | P: 800-4-Kenall | F: 262-891-9701 | 10200 55th Street Kenosha, Wisconsin 53144

This product complies with the Buy American Act: manufactured in the United States with more than 50% of the component cost of US origin. It may be covered by patents found at [www.kenall.com/patents](http://www.kenall.com/patents). Content of specification sheets is subject to change; please consult [www.kenall.com](http://www.kenall.com) for current product details.



## Stratalume™ Series

For undercabinet and other linear task lighting applications where high-quality, durable illumination and stainless steel construction is required, Stratalume™ is a natural choice. It outperforms the commodity lighting fixtures typically applied to millwork, soffit and under-counter office applications. These discreet, high-performance fixtures are perfectly suited to a variety of applications including study carrels, desks, classrooms and offices.



### Stratalume Series

- Durable, cold rolled steel or stainless steel housing
- Solid front or wraparound diffuser
- DR acrylic lens snaps in place for quick relamping
- Flush-end design for continuous end-to-end mounting
- Integral occupancy sensor available



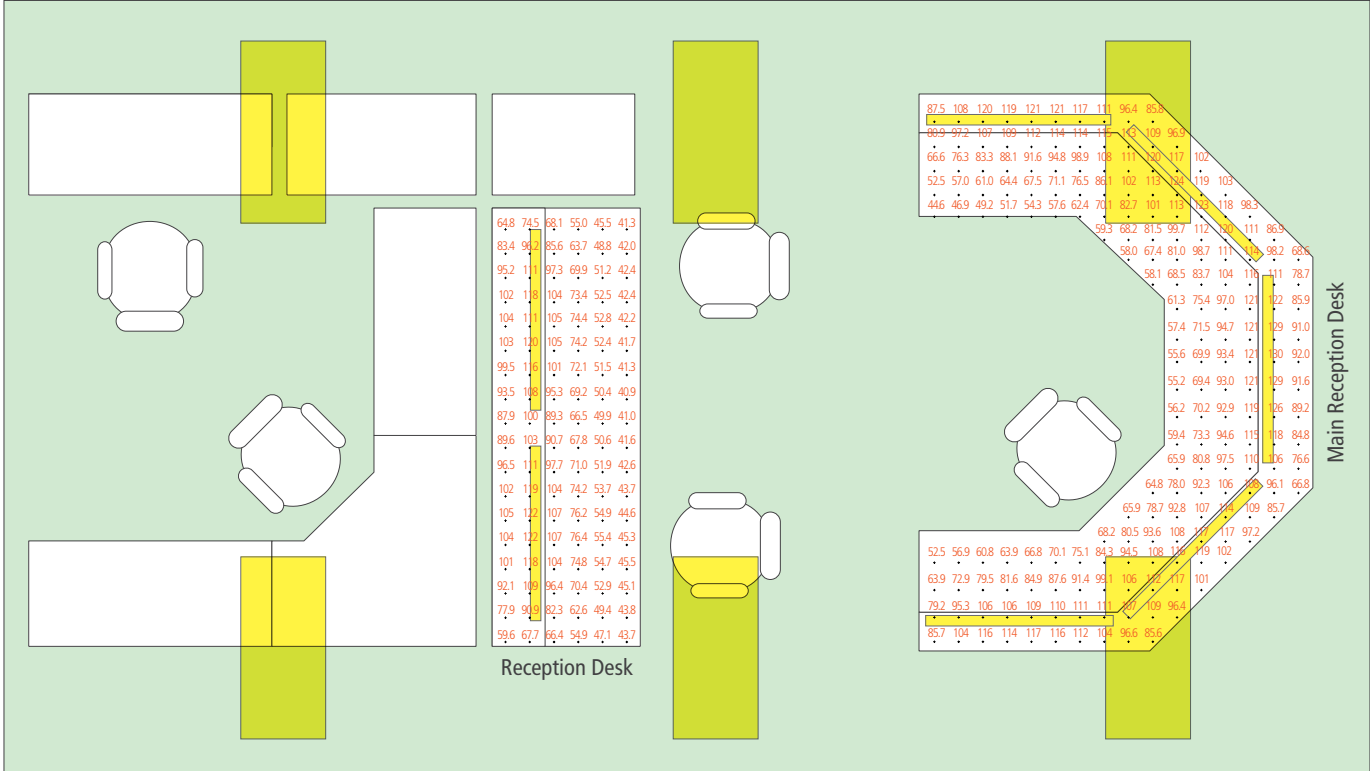
Nominal Size T5	1" x 5"; 1', 2', 3' or 4'
Nominal Size T8	1.75" x 5.5"; 2', 3', 4' or 5'
Lamp Types	T5, T8



www.kenall.com | P: 800-4-Kenall | F: 262-891-9701 | 10200 55th Street Kenosha, Wisconsin 53144

This product complies with the Buy American Act: manufactured in the United States with more than 50% of the component cost of US origin. It may be covered by patents found at [www.kenall.com/patents](http://www.kenall.com/patents). Content of specification sheets is subject to change; please consult [www.kenall.com](http://www.kenall.com) for current product details.

Typical Administrative Area



Fixtures shown:

Ceiling Mount:  AMB24-G-50L35K-DV-FA

Undercabinet:  AUCLED-I-MW-20L35K-48

Calculations are based on 9' ceiling height, 30" task plane, shelf height 20" above task plane, 90/60/20 room reflectance, and 0.80 LLF.

Calculated Illuminance Values:

Task lighting only

Reception Desk		Main Reception Desk	
Illuminance	(Fc)	Illuminance	(Fc)
Average	52.96	Average	71.92
Maximum	102	Maximum	110
Minimum	9.6	Minimum	13.1
Ave/Min Ratio	5.52	Ave/Min Ratio	5.49
Max/Min Ratio	10.63	Max/Min Ratio	8.40

Calculated Illuminance Values (shown above):

Combination of task and ambient lighting

Reception Desk		Main Reception Desk	
Illuminance	(Fc)	Illuminance	(Fc)
Average	92.84	Average	76.27
Maximum	130	Maximum	122
Minimum	44.6	Minimum	40.9
Ave/Min Ratio	2.08	Ave/Min Ratio	1.86
Max/Min Ratio	2.91	Max/Min Ratio	2.98

AUC/MAUC LED Undercabinet Delivered Lumen Chart

CCT	18" (11L)	24" (11L)	36" (16L)	48" (20L)
3000K	700	700	993	1287
3500K	700	700	993	1287
4000K	803	803	1140	1478
Input Power (W)	13W	13W	18W	23W



## Stratalume™ Sample Ordering

### Catalog Number Example For Stratalume Connects™ AUC/MAUC Undercabinet

The following chart demonstrates catalog number logic. Consult specification sheets for complete offerings, options and accessories.

#### Example: AUCLED-S-MW-20L40K-48-277-FS-SW

#### Ordering Information

Model <b>AUCLED</b>	Installation Type <b>S</b>	Finish <b>MW</b>	Lamp Type <b>20L40K</b>	Length <b>48</b>	Voltage <b>277</b>	Options <b>FS-SW</b>	Accessories
------------------------	-------------------------------	---------------------	----------------------------	---------------------	-----------------------	-------------------------	-------------

#### Model

**AUCLED** Architectural Applications  
**MAUCLED†** Healthcare Applications

#### Installation Type

**I** Individual Mount  
**S** Series Mount

#### Finish

**MW†** Matte White  
**MB†** Matte Black  
**SL†** Silver  
**CCW** Custom Color with White end caps  
**CCB** Custom Color with Black end caps

†Antimicrobial finish standard for MAUC Series

#### Lamp Type

**11L30K** 11 Watt 3000K LED  
**11L35K** 11 Watt 3500K LED  
**11L40K** 11 Watt 4000K LED  
**16L30K** 16 Watt 3000K LED  
**16L35K** 16 Watt 3500K LED  
**16L40K** 16 Watt 4000K LED  
**20L30K** 20 Watt 3000K LED  
**20L35K** 20 Watt 3500K LED  
**20L40K** 20 Watt 4000K LED

#### Length

**18** 18" – 11 Watt only  
**24** 24" – 11 Watt only  
**36** 36" – 16 Watt only  
**48** 48" – 20 Watt only

#### Voltage

**120** 120 Volts  
**277** 277 Volts

#### Options

**CS\*** 8' Hard-wired Cordset  
**2C** Series Mount Two-Circuit Wiring  
**FS** Single Fuse & Holder  
**MS** Motion Sensor  
**SW** Rocker Switch

#### Accessories (Series Mount only)\*\*

**WML** 6" Wiring Module w/o Accessory  
**WML/HGO\*** 8" Wiring Module w/ Hospital Grade Outlet  
**WML/SW\*** 6" Wiring Module w/Rocker Switch  
**PCL2** 2' Straight Power Cordset  
**PCL3** 3' Straight Power Cordset  
**PCL4** 4' Straight Power Cordset  
**PCL6** 6' Straight Power Cordset  
**PCL10** 10' Straight Power Cordset

#### Accessories (Continued)

(Series Mount only)\*\*  
**ICL05** 6" Straight Interconnect Cordset  
**ICL1** 1' Straight Interconnect Cordset  
**ICL2** 2' Straight Interconnect Cordset  
**ICL3** 3' Straight Interconnect Cordset

\* 120 Volts only  
\*\* When ordering Accessories, add color suffix:  
–WHT white, –BLK black, –SLV silver, –CCW/–CCB custom color (–SLV and –CCW/–CCB for Wiring Modules only)

### Catalog Number Example For Stratalume MRI Undercabinet

The following chart demonstrates catalog number logic. Consult specification sheets for complete offerings, options and accessories.

#### Example: MRIAUC-I-SL-14L40K-24VDC-SW

#### Ordering Information

Model <b>MRIAUC</b>	Installation Type <b>I</b>	Finish <b>SL</b>	Lamp Type <b>14L40K</b>	Voltage <b>24VDC</b>	Options <b>SW</b>
------------------------	-------------------------------	---------------------	----------------------------	-------------------------	----------------------

#### Installation Type

**I** Individual Mount

#### Finish

**MW** Matte White  
**MB** Matte Black  
**SL** Silver  
**CCW** Custom Color Housing with White end caps  
**CCB** Custom Color Housing with Black end caps

#### Lamp Type/Length

**14L40K** 18.5" – 14 Watt 4000K LED  
**27L40K** 35" – 27 Watt 4000K LED

#### Voltage

**24VDC** 24 Volts DC (MRIPS-312 Power Supply required – order separately)

#### Options

**SW** Rocker Switch



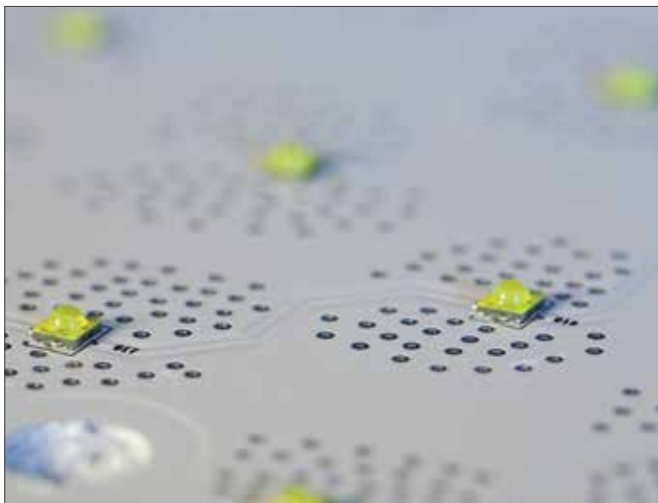


## Advanced Technology and Testing

As a recognized leader in the commercial lighting industry, Kenall is committed to investing considerable resources into the research and development of advanced lighting products. As a pioneer in solid state lighting, Kenall has long recognized LEDs as a strong and viable source for commercial lighting fixtures—providing tremendous opportunity for dramatic savings, intelligent energy reduction, and the preservation of natural resources. Our commitment to the advancement of lighting solutions is evidenced by Kenall's in-house, state-of-the-art certified safety laboratory, membership in the Department of Energy's LED Quality Advocate program, and unrelenting focus on performance listings. At Kenall, commitment is a word we take very seriously.

### Kenall Committed to LED Technology

LED sources present an ideal solution for linear task lighting. Low energy consumption and high efficacy, in concert with a 60,000-hour or better lamp life and low heat output, create the ideal source for many applications. The substantial lamp life of an LED also reduces its maintenance requirements, which limits the fixture's exposure to the elements as well as the potential risk of damage during routine maintenance. In addition, LED sources contain no toxic mercury and emit no harmful UV radiation, creating a truly green source. Its modular design facilitates product upgrades, reducing the material that ends up in landfills, further increasing its sustainability.



### Kenall Sophistication in Testing

Whether testing a luminaire's photometry or its ability to protect against the ingress of dust or water, Kenall is equipped with a state-of-the-art certified safety laboratory, providing the following testing capabilities:

- Certified for safety testing by Underwriters Laboratory and Intertek Testing Laboratories for Incandescent, Fluorescent and HID Luminaires (UL 1598), LED Luminaires (UL 8750) Hazardous Locations (UL 844, Class I Div II, and Emergency Lighting (UL 924)
- Ingress Protection testing (Dust and Water chambers)
- Highly Accelerated Stress Screening (-50°C to 150°C Environmental Chamber)
- 25°C and 40°C thermal testing rooms
- LM-79 photometric laboratory including a Type C goniophotometer as well as a 2-meter integrating sphere with spectroradiometer



## Warranties

On behalf of our valued customers, Kenall promises to stand behind the products we design, engineer and manufacture. Our commitment to excellence enables us to offer a variety of unprecedented product warranties for our lighting fixtures including:

### LED Warranty

Kenall's LED products are warranted by Kenall to be free of defects in workmanship and materials for a period of one (1) year from the date of invoice. Kenall warrants LED lamps and internal power regulation components for a minimum of five (5) years from the date of invoice against defects in materials and workmanship that result in a fixture depreciation of 30% or greater. Lumen depreciation is compared to the published lumen output of the product on the date of manufacture per IESNA LM-79 reporting procedures. Normal accumulation of particulates on the optical surfaces shall not be factored into the lumen depreciation. Kenall's Peace of Mind Guarantee® is available on select LED products. Refer to Kenall specification sheet for product specific warranties.

### MRI Warranty

When installed properly, Kenall's MRI luminaires are warranted to be free of defects in workmanship and materials for a period of one year from the date of invoice. The DC power supply contained in the external power supply carries a five-year warranty from the date of invoice.

Kenall reserves the right to issue credit, repair, or replace the defective merchandise, at its discretion, upon notification and confirmation by its local representative of the defect. Kenall also reserves the right to test and examine the defective product if the defect is questionable, and to deny the warranty herein for any product altered, improperly installed, or installed in applications for which it is not intended. This includes operation in ambient temperatures above stated limits for any length of time. Failure by electrical surge shall not be covered under warranty.

Kenall assumes no responsibility for labor or freight costs incurred in connection with the installation, removal, or replacement of products determined to be defective, or any other consequential or incidental damages arising from the use of the product. Kenall's entire liability on any claim of loss or damage resulting from a defective product is limited to the replacement price of the product.

### SCANSAFE Guarantee™

Kenall will repair or replace any MRI LED product, for a period of one year, when installed according to our instructions, that fails to perform to applicable MRI room interference and susceptibility standards.

In addition, Kenall will repair or replace only LED products that fail to provide 70% of rated light output for five years from its date of installation.

## LED Lighting Facts® — Department of Energy LED Quality Advocate Program For LED Luminaires

As a member of the Department of Energy's LED Quality Advocates, Kenall Manufacturing includes the Lighting Facts label on select LED luminaires. The label reports product performance results in five areas from actual test data\* in accordance with industry standards measuring photometric performance of LEDs:

- Luminaire light output
- Efficacy (lumens per watt)
- Measured power (watts)
- Correlated Color Temperature
- Color Rendering Index

Kenall Manufacturing is a registered Lighting Facts Product Partner. For more information about this program or for copies of our Lighting Fact Labels please contact Kenall at [info@kenall.com](mailto:info@kenall.com), or visit us on the web at [www.kenall.com](http://www.kenall.com).

\* Luminaire measurements have been standardized with the issuance of the IESNA Standard LM-79-2008 test procedure.



Representative Lighting Facts label

## Kenall's ISO/IEC Accredited Photometric Lab Expedites Design Lights Consortium (DLC) Listings

Kenall's state-of-the-art photometric lab has passed the most stringent proficiency testing in the industry to become ISO/IEC 17025 accredited. In doing so, we have earned the prestigious credentials for both the Department of Energy's Lighting Facts® listings and Design Light Consortium approvals. This accreditation enables us to submit multiple LED listings in multiple colors with the benefit of shortened lead times.



[www.kenall.com](http://www.kenall.com) | P: 800-4-Kenall | F: 262-891-9701 | 10200 55th Street Kenosha, Wisconsin 53144

This product complies with the Buy American Act: manufactured in the United States with more than 50% of the component cost of US origin. It may be covered by patents found at [www.kenall.com/patents](http://www.kenall.com/patents). Content of specification sheets is subject to change; please consult [www.kenall.com](http://www.kenall.com) for current product details.

## 14 | Lighting Challenging Environments

Kenall offers luminaires designed according to industry best practices and certified performance standards in each market segment we serve. From high abuse fixtures with an exclusive 'Peace of Mind' Guarantee® against breakage and healthcare fixtures sealed for infection control, to sealed enclosure fixtures that comply with stringent military standards for RFI/EMI and food processing fixtures that carry mission critical NSF, NEMA and IP ratings, our fixtures are designed with your specific needs in mind.

High Abuse

HA

Guaranteed against breakage for the life of the installation.

### Main Applications

- Schools & Universities
- Public environments
- Military
- Restrooms & Stairwells



Healthcare

HC

Engineered to the specialized demands of healthcare environments with an attention to cleanability and infection control.

### Main Applications

- Patient rooms
- Surgical suites
- MRI
- Labs



Sealed Enclosure

SE

One piece, seam welded enclosures for containment, controlled and sealed spaces.

### Main Applications

- Pharmaceutical & Research labs
- Cleanrooms
- Corrosive environments
- Hazardous locations



Food Processing

FP

Sealed, NSF listed, high-efficiency lighting for food processing and preparation.

### Main Applications

- Food processing & preparation
- Freezers
- Hosedown environments
- Hazardous locations



www.kenall.com | P: 800-4-Kenall | F: 262-891-9701 | 10200 55th Street Kenosha, Wisconsin 53144

This product complies with the Buy American Act: manufactured in the United States with more than 50% of the component cost of US origin. It may be covered by patents found at [www.kenall.com/patents](http://www.kenall.com/patents). Content of specification sheets is subject to change; please consult [www.kenall.com](http://www.kenall.com) for current product details.



## Lighting Challenging Environments

Whether you're lighting a healthcare facility and need fixtures that support effective infection control and cleanability, or a tunnel, transit platform or parking facility that calls for features like corrosion-, shock- and vibration-resistance, Kenall can help at every turn. For dependable task lighting that requires environmental integrity and versatility, or emergency exit lighting that meets life safety codes, you can depend on Kenall.

Correctional

**COR**

Leader in heavy gauge, welded enclosures to deter even the most determined attempts to destroy, enter or vandalize.

Main Applications

- Cells
- Common areas
- Behavioral health
- Dayrooms



Transportation

**TR**

Meeting the specialized demands of transportation related structures for high performance, corrosion resistance and serviceability.

Main Applications

- Tunnel & Underpass
- Platform & Depot
- Parking deck & Surface lot
- Bridges



Task Lighting

**TL**

High-efficiency LED, modular undercabinet lighting for professional spaces.

Main Applications

- Nurses stations
- Labs/MRI suites
- University dorms & Administration areas
- Military/Government



Emergency

**EE**

High abuse, extreme environment LED exit and emergency egress lighting.

Main Applications

- Schools & Universities
- Recreational
- Sealed & Correctional environments
- Outdoor/cold weather/extreme conditions



www.kenall.com | P: 800-4-Kenall | F: 262-891-9701 | 10200 55th Street Kenosha, Wisconsin 53144

This product complies with the Buy American Act: manufactured in the United States with more than 50% of the component cost of US origin. It may be covered by patents found at [www.kenall.com/patents](http://www.kenall.com/patents). Content of specification sheets is subject to change; please consult [www.kenall.com](http://www.kenall.com) for current product details.



1020 Lakeside Drive  
Gurnee, Illinois 60031  
847-360-8200  
FAX 847-360-1781  
[www.kenall.com](http://www.kenall.com)

©2013 Kenall Mfg. Co.  
All rights reserved.  
L10012-052013