

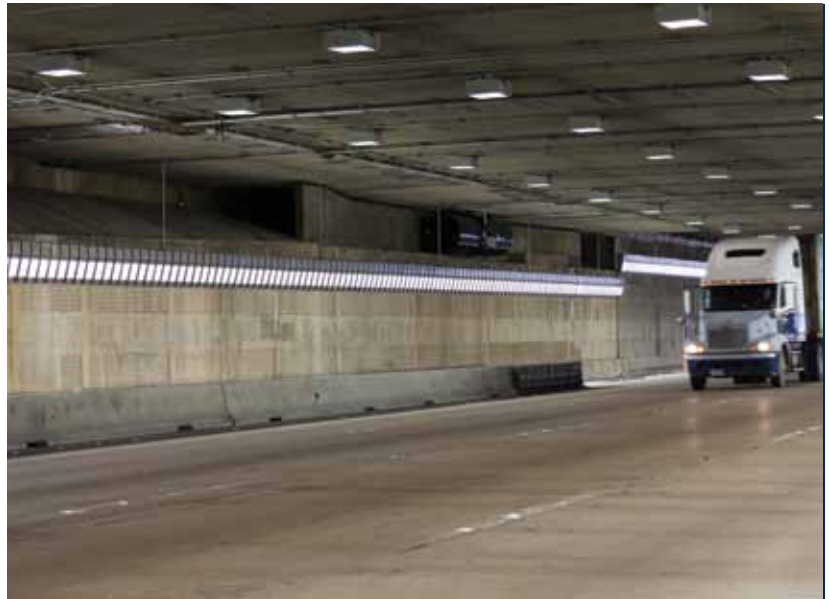


LTS Series

- Powered by RD700 distributed DC driver system; remotely-located for servicing convenience
- Suitable for supplemental lighting in transition zones with a ceiling or wall orientation; ADA compliant
- Stainless steel structural construction with marine-grade aluminum heat sinks
- Serviceable high-brightness LED array
- Clear tempered glass or polycarbonate lens
- Type II, Type V-Narrow Round, Type-Square and Pro-Beam optical configurations
- 300W, 390W, 396W, 600W and 780W
- 4000K, 5000K, 5700K
- 65 CRI minimum
- 10-year limited product warranty

Tunnel Lighting

Rigorously designed and tested, Kenall's LTS LED Series tunnel luminaire meets stringent performance standards necessary for tunnel lighting projects. With the RD700 distributed DC driver system remotely-located, servicing is convenient and easy. Kenall tunnel luminaires are completely customizable to address the highly complex and challenging needs of tunnel applications.



Contact Michael Maltezos at 847-507-4531 or Mmaltezos@kenall.com to assist you with your next tunnel project.