

SIMPLESEAL™

CTD SERIES – LED – TEAR DROP

PRODUCT FEATURES:

- » Surface grid mount – 4' and 8' lengths
- » Available White LED or Narrow-spectrum 590nm amber LED
- » ISO Class 3 (Fed-Std 209E/Class 1)
- » Optical system reduces glare and improves visibility
- » Low profile construction for modern aesthetic



PROJECT INFORMATION

Job Name _____

Fixture Type _____

Catalog Number _____

Approved by _____

SPECIFICATIONS:

HOUSING: Extruded marine-grade aluminum with white TGIC polyester powder coat finish – 5-step pretreatment; laboratory salt spray test: 1,000 hours (standard).

END CAPS: 10 gauge Aluminum with flattened 1/2" trade size knockout each end. Finish matches housing.

LENS: UV-stabilized, impact-resistant extruded frost acrylic. Smooth exterior with snap-in tool-less entry design.

ELECTRICAL: Serviceable mid-power white LED arrays in 3500K, 4000K and 5000K color temperatures with maximum 3-step MacAdam variation allowance. Minimum 80 CRI. Available 590nm amber (115nm FWHM bandwidth) mid-power LED arrays produce no ultraviolet (UV) and less than 0.019W of light below 480nm. 120-277VAC or 347VAC, 50/60Hz electrical input with replaceable high power factor electronic, constant-current driver (<10% THD, >0.90 PF). Minimum 85% driver efficiency. Standard 0-10V dimming with 1-100% dimming and dim-to-dark capabilities; 0.2mA max. source current. Optional DALI-2/LEDcode2 driver with 1-100% dimming range.

INSTALLATION: Intended for surface mount to t-bar grid (see Installation Details). Two (2) .281" mounting holes for 4' fixture. Four (4) mounting holes for 8' fixture. 1/2 knockout in center rear and one flattened knockout on each endcap. Hub connector kit (HC) option for continuous run installation provides hardware required for mechanical and electrical connection of units using conduit knockouts within endcaps.

WARRANTY: Limited five (5) year LED warranty.

LISTINGS: Luminaire is certified to UL standards by Intertek Testing Laboratory for Damp Location. IP53 rating per IEC60598. FED-STD 209E/Class 1 (ISO 3) Cleanrooms.



ORDERING INFORMATION (Ex: CTD-4-45L-40K8-DIM1-DV-LEL)

| Model | Length | Lamp Power | Lamp Color | Driver Type | Voltage | Options |
|------------|--------------------|--|------------|-------------|-------------------------------|--|
| CTD | | | | | | |
| | Length | Lamp Power | | | Voltage | |
| | 4 4' Length | 45L 45 Watt White LED (4' only) | | | DV 120-277VAC, 50/60Hz | |
| | 8 8' Length | 45A 45 Watt 590nm Amber (4' only) | | | 347 347VAC, 60Hz | |
| | | 90L 90 Watt White LED (8' only) | | | | Options |
| | | 90A 90 Watt 590nm Amber (8' only) | | | | LEL* 6W Self-Testing Emergency Battery Backup with Side-Mounted Test Button |
| | | Lamp Color▲ | | | | FS Fuse & Holder |
| | | 35K8 3500K / 80CRI min. | | | | HC Row Mount Hub Connector Kit |
| | | 40K8 4000K / 80CRI min. | | | | |
| | | 50K8 5000K / 80CRI min. | | | | |
| | | Driver Type | | | | |
| | | DIM1 0-10V Dimming to 1% with Dim-to-Dark | | | | * n/a with 347V input |
| | | DALI* DALI-2/LEDcode2 Dimming to 1% without Dim-to-Dark | | | | ▲ n/a with Amber Lamp Power |



www.kenall.com | P: 800-4-Kenall | F: 262-891-9700 | 10200 55th Street Kenosha, Wisconsin 53144, USA

This product complies with the Buy American Act: manufactured in the United States with more than 50% of the component cost of US origin. It may be covered by patents found at www.kenall.com/patents. Content of specification sheets is subject to change; please consult www.kenall.com for current product details. ©2023 Kenall Mfg. Co.

A brand of **legrand**

SIMPLESEAL™

CTD SERIES – LED – TEAR DROP

PERFORMANCE – WHITE

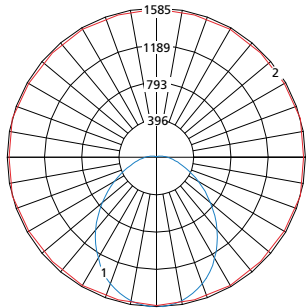
| Model | Lamp Power | Initial Delivered Lumens, by Lamp Color (lm) | | | Efficacy (lm/W) | Input Power (W) | Estd. L70 LED Life (hrs) |
|-------|------------|--|--------|--------|-----------------|-----------------|--------------------------|
| | | 30K8 | 40K8 | 50K8 | | | |
| CTD-4 | 45L | 5,789 | 5,981 | 6,160 | 110 - 117 | 53 | 100,000 |
| CTD-8 | 90L | 11,579 | 11,962 | 12,320 | 110 - 117 | 106 | 100,000 |

PERFORMANCE – AMBER

| Model | Lamp Power | Initial Delivered Lumens (lm) | Efficacy (lm/W) | Input Power (W) | Estd. L70 LED Life (hrs) |
|-------|------------|-------------------------------|-----------------|-----------------|--------------------------|
| CTD-4 | 45A | 4,241 | 82 | 52 | 100,000 |
| CTD-8 | 90A | 8,482 | 82 | 104 | 100,000 |

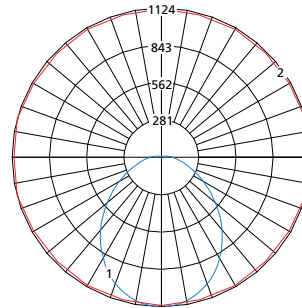
Photometry tested to the IESNA LM-79-08 standard by an ILAC/ISO17025 accredited laboratory. For photometric data, please go to www.kenall.com.

Model: CTD-4-45L-40K8-yyyy-zzz (White)



Maximum Candela = 1585 Located At Horizontal Angle = 15, Vertical Angle = 2.5
 1 - Vertical Plane Through Horizontal Angles (15-195) (Through Max. Cd.)
 2 - Horizontal Cone Through Vertical Angle (2.5) (Through Max. Cd.)

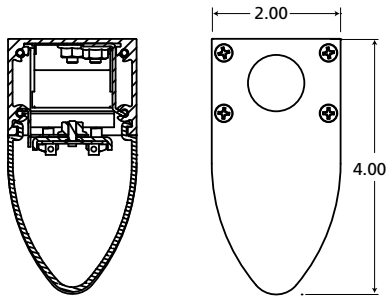
Model: CTD-4-45A-yyyy-zzz (Amber)



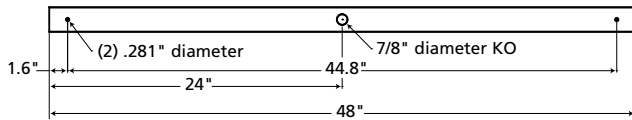
Maximum Candela = 1124 Located At Horizontal Angle = 15, Vertical Angle = 2.5
 1 - Vertical Plane Through Horizontal Angles (15-195) (Through Max. Cd.)
 2 - Horizontal Cone Through Vertical Angle (2.5) (Through Max. Cd.)

DIMENSIONAL DATA

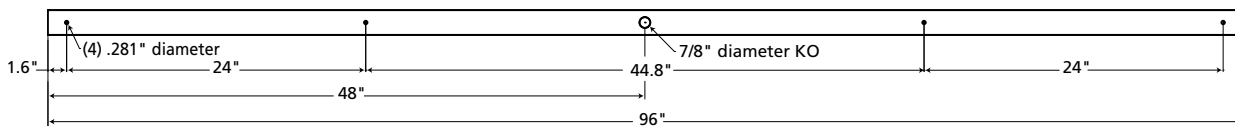
CROSS SECTION



4' MOUNTING HOLES/WIRE-FEED



8' MOUNTING HOLES/WIRE-FEED



www.kenall.com | P: 800-4-Kenall | F: 262-891-9700 | 10200 55th Street Kenosha, Wisconsin 53144, USA

A brand of **Legrand**

This product complies with the Buy American Act: manufactured in the United States with more than 50% of the component cost of US origin. It may be covered by patents found at www.kenall.com/patents. Content of specification sheets is subject to change; please consult www.kenall.com for current product details. ©2023 Kenall Mfg. Co.