

EDUCATIONAL TROFFER

Luminaire for General Education Applications

EGT SERIES using Indigo-Clean Technology

PROJECT INFORMATION

Job Name _____

Fixture Type _____

Catalog Number _____

Approved by _____

PRODUCT FEATURES:

- » Provides environmental disinfection and effective, efficient lighting performance via visible LED light
- » Dual-Mode Indigo-Clean Technology is independently tested to kill 94% of SARS CoV-2 and Influenza-A*, in addition to MRSA
- » Single-Mode Indigo-Clean Technology is independently tested to kill harmful bacteria, such as Staph**, including MRSA***
- » Low profile 2' x 2' and 2' x 4' recessed luminaire with grid and flange mounting options



EGT22



EGT24

SPECIFICATIONS

HOUSING: Die-formed 24-gauge steel construction. Low-gloss white TGIC powder coat finish with five-stage pre-treatment.

OPTIC: Snap-in, one-piece extruded frosted DR acrylic diffuser.

ELECTRICAL: (Single- and Dual-Mode ICT) Serviceable mid-power white and 405nm Indigo LED array. Available 3200K, 3700K and 4300K color temperatures with 3-step MacAdam variation allowance. Minimum 82 CRI standard. 120-277VAC and 347VAC electrical input with serviceable high power factor electronic, constant-current drivers (0.90 PF). Minimum 85% driver efficiency. Standard 0-10V dimming with 1-100% range and dim-to-dark capabilities (non-dim-to-dark on Dual-Mode ICT). 165µA maximum source current. **Single-Mode ICT** provides a single, white disinfection operational mode. **Dual-Mode ICT** provides two operational modes based on room occupancy. White Disinfection Mode is a white LED array for ambient lighting plus a simultaneous low-power 405nm LED array for low-level, continuous and safe environmental disinfection. Indigo Disinfection Mode is a higher-level 405nm array for continuous safe environmental disinfection during periods of room vacancy. The operational mode is determined via internal low-voltage device based upon the input signal provided by an external control device/system, such as the [IC150](#) product. Luminaire dimming is overridden in this operational state. Refer to the [Kenall Dual-Mode ICT Control Application Guide](#) for further description.

INSTALLATION: Suitable for Type-IC recessed ceiling installation into 9/16", 15/16" and slot-T lay-in grid ceilings and flanged drywall ceilings with included flange adapter kit. See Ordering Information for selection. Removable wiring access plate with (2) 7/8" Dia. knockouts. Suitable for 0°C to 25°C ambient temperature environments.

PHOTOMETRICS: Photometry tested to the IESNA LM-79-08 standard by an ILAC/ISO17025 accredited laboratory. For additional photometric data, please go to www.kenall.com.

WARRANTY: Limited five (5) year warranty.

LISTINGS: Luminaire is certified to UL Standards by Intertek Testing Laboratory for Damp Location and IC installations. NSF2 Splash/Non-Food Zone. RoHS compliant.

*Refer to www.indigo-clean.com for details.

** Per independent lab report #SGS-09S17036476. Contact Kenall for a copy of this report.

***Antimicrobial Activity of a Continuous Visible Light Disinfection System by Rutala, et. al, ID Week 2016.



ORDERING INFORMATION (Ex: EGT24-G-FA-23I/55C-32K8-DIM1-DV-FS)

Model	Mounting	Lens Type	Lamp Type	Lamp Color	Driver Type	Voltage	Options
		FA			DIM1		
Model		Lamp Power		Lamp Color		Voltage	
EGT22 2'x2'		2x2		32K8 3200K / 82CRI		DV 120-277 VAC, 50/60Hz	
EGT24 2'x4'		28C 28W Single-Mode ICT		37K8 3700K / 82CRI		347 347 Volts	
		12I/28C 28W Dual-Mode ICT		43K8 4300K / 82CRI			
Mounting Options		2x4		Driver Type		Options	
G Grid (1")		55C 55W Single-Mode ICT		DIM1 0-10V Dimming to 1%		FS Fuse & Holder	
F Flange		23I/55C 55W Dual-Mode ICT					
Lens Type							
FA Frost DR Acrylic							



www.kenall.com | P: 800-4-Kenall | F: 262-891-9700 | 10200 55th Street Kenosha, Wisconsin 53144, USA

This product can comply with the latest domestic preference legislation, such as the Buy American Act (BAA), Trade Agreement Act (TAA), Build America, Buy America Act (BABA), and others. It may be covered by patents found at www.kenall.com/patents. Content of specification sheets is subject to change; please consult www.kenall.com for current product details. ©2024 Kenall Mfg. Co.

A brand of Legrand

EDUCATIONAL TROFFER

EGT SERIES using Indigo-Clean Technology

PERFORMANCE

Technology	Size	Lamp Code	Lumen Output by Color (lm) ¹			Efficacy (lm/W)	Power Consumption ²			Estd. L ₇₀ LED Life (Hrs)
			32K8	37K8	43K8		Occupied (W)	LPD (W)	Unoccupied (W)	
Single-Mode ICT	2 x 2	28C	2,906	2,981	3,011	91 - 95	32	26	0	80,000
	2 x 4	55C	5,748	5,897	5,957	94 - 98	61	51		
Dual-Mode ICT	2 x 2	12I/28C	2,906	2,981	3,011	91 - 95	32	26	15	80,000
	2 x 4	23I/55C	5,748	5,897	5,957	94 - 98	61	51	29	

¹Information subject to change without notice. Visit www.kenall.com for IES files and additional information.

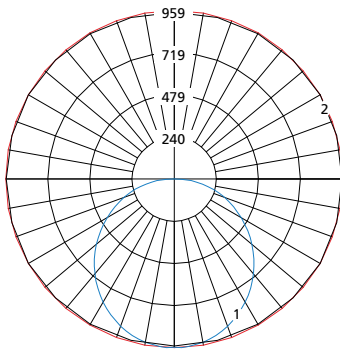
²Lighting Power and Energy Calculations:

Use **Occupied Power** for total electrical load calculations. Use this value to estimate branch circuit lighting loads.

Use **LPD Power** for lighting power density calculations. Only the power attributed to white light is required per NEMA LSD EB 84-202X. Power used toward germicidal disinfection can be removed for this calculation.

Use **Unoccupied** and **Occupied Power** for Energy calculations to determine the power consumed over time based on the use of the space.

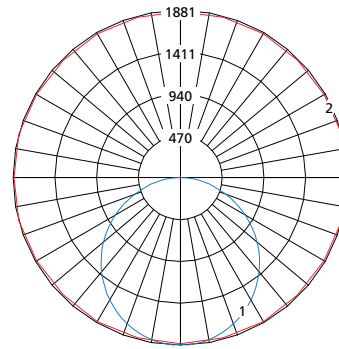
Model: EGT22-FA-28C-43K8-DIM1 and EGT22-FA-12I/28C-43K8-DIM1



Maximum Candela = 959 Located At Horizontal Angle = 30, Vertical Angle = 2.5

- 1 - Vertical Plane Through Horizontal Angles (30-210) (Through Max. Cd.)
- 2 - Horizontal Cone Through Vertical Angle (2.5) (Through Max. Cd.)

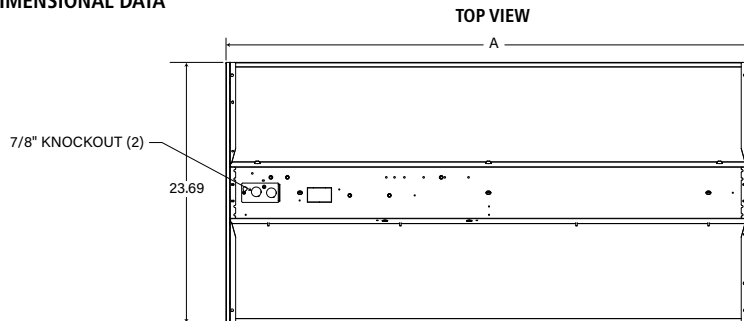
Model: EGT24-FA-55C-43K8-DIM1 and EGT24-FA-23I/55C-43K8-DIM1



Maximum Candela = 1881 Located At Horizontal Angle = 15, Vertical Angle = 2.5

- 1 - Vertical Plane Through Horizontal Angles (15-195) (Through Max. Cd.)
- 2 - Horizontal Cone Through Vertical Angle (2.5) (Through Max. Cd.)

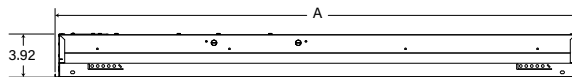
DIMENSIONAL DATA



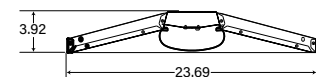
DIMENSIONAL DATA (IN INCHES)

	A
EGT22	23.69"
Recommended ceiling cutout for 2x2 Flange Frame Kit is 24.50" x 24.50"	
EGT24	47.69"
Recommended ceiling cutout for 2x4 Flange Frame Kit is 48.50" x 24.50"	

SIDE VIEW



FRONT VIEW



www.kenall.com | P: 800-4-Kenall | F: 262-891-9700 | 10200 55th Street Kenosha, Wisconsin 53144, USA
 This product can comply with the latest domestic preference legislation, such as the Buy American Act (BAA), Trade Agreement Act (TAA), Build America, Buy America Act (BABA), and others. It may be covered by patents found at www.kenall.com/patents. Content of specification sheets is subject to change; please consult www.kenall.com for current product details. ©2024 Kenall Mfg. Co.

A brand of **legrand**