

EDUCATIONAL TROFFER

Luminaire for General Education Applications

EGT SERIES

PROJECT INFORMATION

Job Name _____

Fixture Type _____

Catalog Number _____

Approved by _____

PRODUCT FEATURES:

- » Low profile 2' x 2' and 2' x 4' recessed luminaire with grid and flange mounting options
- » High-output, high-CRI LED lamp options
- » Sleek, curve style acrylic diffuser provides even illumination
- » NSF2 rating for ease of wipe-down cleaning



SPECIFICATIONS

HOUSING: Die-formed 24-gauge steel construction. Low-gloss white TGIC powder coat finish with five-stage pre-treatment.

OPTIC: Snap-in, one-piece extruded frosted DR acrylic diffuser.

LED MODULE: Serviceable mid-power LED array. Minimum 82 CRI standard (R9 >20). See Ordering Information for available color temperature options. Maximum 3-step MacAdam variation allowance.

LED DRIVER: 120-277VAC or 347VAC, 50/60Hz electrical input with serviceable constant-current driver (<10% THD, >0.90PF). Minimum 85% driver efficiency. Standard 0-10V dimming with 1-100% range and dim-to-dark capabilities (non dim-to-dark with 347V); maximum 165 µA source current.

SENSOR & CONTROLS: Optional sensor available with compatible third party controls. To see the full list of compatible controls, [click here](#).

INSTALLATION: Suitable for Type-IC recessed ceiling installation into 9/16", 15/16" and slot-T lay-in grid ceilings and flanged drywall ceilings with included flange adapter kit. See Ordering Information for selection. Removable wiring access plate with (2) 7/8" Dia knockouts. Suitable for 0°C to 25°C ambient temperature environments.

PHOTOMETRICS: Photometry tested to the IESNA LM-79-08 standard by an ILAC/ISO17025 accredited laboratory. For additional photometric data, please go to www.kenall.com.

WARRANTY: Limited five (5) year warranty.

LISTINGS: Luminaire is certified to UL Standards by Intertek Testing Laboratory for Damp Location and IC installations. NSF2 Splash/Non-Food Zone. RoHS compliant.



ORDERING INFORMATION (Ex: EGT24-G-FA-45L-30K8-DIM1-DV-FS)

Model	Mounting	Lens Type	Lamp Type	Lamp Color	Driver Type	Voltage	Options
		FA		DIM1			
Model		Lamp Power		Lamp Color		Voltage	
EGT22 2'x2'		2x2		30K8 3000K / 82CRI		DV 120-277 VAC, 50/60Hz	
EGT24 2'x4'		25L 25 Watt LED		35K8 3500K / 82CRI		347 347 Volts	
		35L 35 Watt LED		35K9 3500K / 90CRI			
				40K8 4000K / 82CRI			
				40K9 4000K / 90CRI			
Mounting Options		2x4		Driver Type		Options	
G Grid (1")		45L 45 Watt LED		DIM1 0-10V Dimming to 1%		F5 Fuse & Holder	
F Flange		67L 67 Watt LED					
Lens Type							
FA Frost DR Acrylic							



www.kenall.com | P: 800-4-Kenall | F: 262-891-9700 | 10200 55th Street Kenosha, Wisconsin 53144, USA
 This product can comply with the latest domestic preference legislation, such as the Buy American Act (BAA), Trade Agreement Act (TAA), Build America, Buy America Act (BABA), and others. It may be covered by patents found at www.kenall.com/patents. Content of specification sheets is subject to change; please consult www.kenall.com for current product details. ©2024 Kenall Mfg. Co.

A brand of Legrand

EDUCATIONAL TROFFER

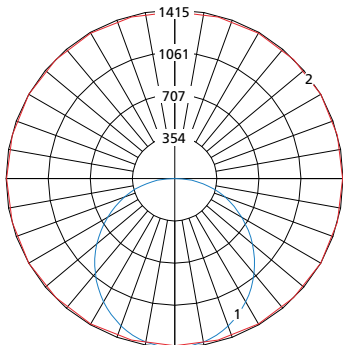
EGT SERIES

PERFORMANCE

Size	Lamp Code	Lumen Output by Color (lm)					Efficacy (lm/W)	Input Power (W)	Estd. L ₇₀ LED Life (Hrs)
		30K8	35K8	35K9	40K8	40K9			
2 x 2	25L	3,033	3,127	2,789	3,234	2,996	97 - 112	29	80,000
	35L	4,169	4,298	3,833	4,444	4,117	104 - 120	37	
2 x 4	45L	5,399	5,566	4,964	5,756	5,332	106 - 123	47	80,000
	67L	8,407	8,667	7,729	8,962	8,302	110 - 128	70	

Information subject to change without notice. Visit www.kenall.com for IES files and additional information.

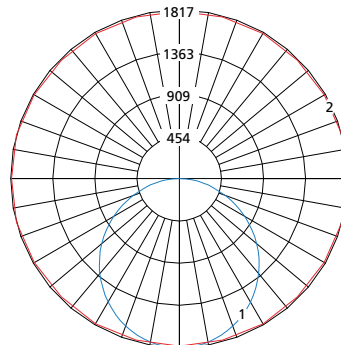
Model: EGT22-FA-35L-40K8-DIM1



Maximum Candela = 1415 Located At Horizontal Angle = 30, Vertical Angle = 2.5

- 1 - Vertical Plane Through Horizontal Angles (30-210) (Through Max. Cd.)
- 2 - Horizontal Cone Through Vertical Angle (2.5) (Through Max. Cd.)

Model: EGT24-FA-45L-40K8-DIM1

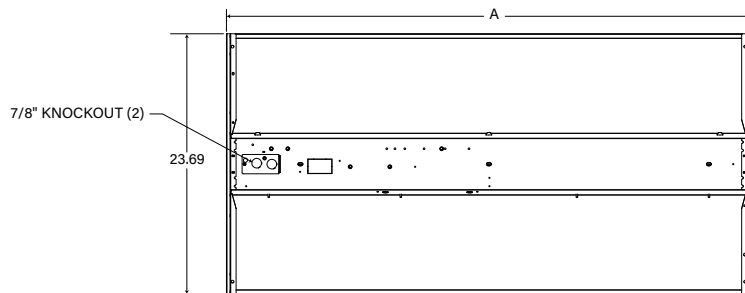


Maximum Candela = 1817 Located At Horizontal Angle = 15, Vertical Angle = 2.5

- 1 - Vertical Plane Through Horizontal Angles (15-195) (Through Max. Cd.)
- 2 - Horizontal Cone Through Vertical Angle (2.5) (Through Max. Cd.)

DIMENSIONAL DATA

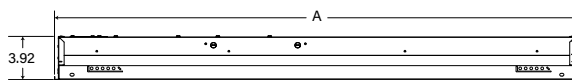
TOP VIEW



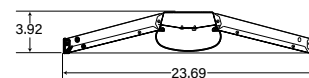
DIMENSIONAL DATA (IN INCHES)

	A
EGT22	23.69"
Recommended ceiling cutout for 2x2 Flange Frame Kit is 24.50" x 24.50"	
EGT24	47.69"
Recommended ceiling cutout for 2x4 Flange Frame Kit is 48.50" x 24.50"	

SIDE VIEW



FRONT VIEW



www.kenall.com | P: 800-4-Kenall | F: 262-891-9700 | 10200 55th Street Kenosha, Wisconsin 53144, USA
 This product can comply with the latest domestic preference legislation, such as the Buy American Act (BAA), Trade Agreement Act (TAA), Build America, Buy America Act (BABA), and others. It may be covered by patents found at www.kenall.com/patents. Content of specification sheets is subject to change; please consult www.kenall.com for current product details. ©2024 Kenall Mfg. Co.

A brand of **legrand**