

# HERCULUX™

## H1212 SERIES – DEEP PROFILE HOUSING

### PRODUCT FEATURES:

- » Surface ceiling mount – nominal 17"Wx17"Wx9"D
- » One-piece heavy duty die-cast housing
- » UV-stabilized, injection molded polycarbonate lens
- » Stainless steel Torx® fasteners



### PROJECT INFORMATION

Job Name \_\_\_\_\_

Fixture Type \_\_\_\_\_

Catalog Number \_\_\_\_\_

Approved by \_\_\_\_\_

### SPECIFICATIONS

**HOUSING:** One-piece heavy duty die-cast, low-copper aluminum housing. Housing flange interlocks around lens producing maximum moisture deflection and resistance to prying. Housing provided with four standoff mounting holes. One 3/4" IPS tapped hole on back of housing. Two 3/4" IPS tapped and plugged holes on sides of housing – see Cross Section/Details. Standard housing in dark bronze TGIC polyester powder coat – 5-stage pre-treatment.

**REFLECTOR:** High reflectance painted aluminum.

**LENS:** One-piece wraparound lens (UV-stabilized, high impact, virgin injection molded polycarbonate). Smooth exterior, prismatic interior. Nominal thickness: 0.125".

**VISOR:** One-piece injection molded opaque dark bronze polycarbonate (UV-stabilized). Optional finishes to match housing. Nominal thickness .125". Visor allows for full-cutoff light output.

**GASKET:** Die-cut closed cell neoprene gasket seals housing to mounting surface. Lens inset into housing and sealed with one "O" ring closed cell silicone gasket.

**HARDWARE:** Four stainless steel Torx® T-20 with center pin fasteners secure lens/visor to housing.

**ELECTRICAL:** Available in 3500K, 4000K, and 5000K color temperatures, 80 CRI. 120-277VAC or 347VAC, 50/60Hz electrical input with high power factor electronic, constant-current driver (>.90 PF). Standard 0-10V dimming with 1-100% range; maximum driver source of 200 µA. Optional embedded microwave motion sensor (MS) has factory default settings of 20 minute time out, dims down to 30%.

**SENSOR & CONTROLS:** Optional sensor available with compatible third party controls. To see the full list of compatible controls, [click here](#).

**INSTALLATION:** Standard four-point mounting required for Peace of Mind Guarantee®.

**PHOTOMETRICS:** Photometry tested to the IESNA LM-79-08 standard by an ILAC/ISO17025 accredited laboratory. For additional photometric data, please go to [www.kenall.com](http://www.kenall.com).

**WARRANTY:** Limited five (5) year LED warranty. [Peace of Mind Guarantee against breakage](#).

**LISTINGS:** Luminaire is certified to UL Standards by Intertek Testing Laboratory for Wet Location. Luminaire tested to an IK10 impact protection rating per IEC 60068-2-75:1997-08.



### ORDERING INFORMATION (Ex: H1212DSD-PP-MB-50L40K-DV)

Model	Lens Type	Finish	Lamp Type	Voltage	Options	Accessories
<b>H1212DSD</b>	<b>PP</b>					
	<b>Lens Type</b>		<b>Lamp Type</b>		<b>Options</b>	
	<b>PP</b> Pearlescent Polycarbonate		<b>25L35K</b> 25 Watt 3500K LED		<b>LEL†</b> LED Emergency Battery Backup (n/a with 50L, n/a with 347V)	
			<b>25L40K</b> 25 Watt 4000K LED		<b>MS†</b> Motion Sensor (n/a with 347V)	
	<b>Finish</b>		<b>25L50K</b> 25 Watt 5000K LED		<b>BPC•</b> Photo Control – Button Type (120 or 277V only)	
	<b>DB</b> Dark Bronze		<b>50L35K</b> 50 Watt 3500K LED		<b>20KV†</b> 20KV/KA Surge Protection per IEEE/ANSI C62.41.2 Cat. A	
	<b>MB</b> Matte Black		<b>50L40K</b> 50 Watt 4000K LED		<b>FS</b> Single Fuse & Holder	
	<b>MW</b> Matte White		<b>50L40K</b> 50 Watt 5000K LED		<b>QMS†</b> Quick Mount System (n/a with 347V) – Damp Location Only (Mounting base ordered separately – see Accessories)	
	<b>LG</b> Light Gray					
	<b>SL</b> Silver		<b>Voltage</b>			
	<b>FG</b> Forest Green		<b>120</b> 120 Volts			
	<b>CC</b> Custom Color (Consult factory)		<b>277</b> 277 Volts			
			<b>347▼</b> 347 Volts			
			<b>DV▼</b> 120-277 Volts			
					<b>Accessories</b>	
					<b>9100C</b> Quick Mount System Mounting Base – for use with QMS option fixtures (n/a with 347V)	
					† LEL n/a in conjunction with: QMS, 20KV, or MS option	
					▼ n/a with BPC	
					• n/a with 347 or DV Voltage type	



[www.kenall.com](http://www.kenall.com) | P: 800-4-Kenall | F: 262-891-9700 | 10200 55th Street Kenosha, Wisconsin 53144, USA  
 This product is able to comply with the latest domestic preference legislation, such as the Buy American Act (BAA), Trade Agreement Act (TAA), Build America, Buy America Act (BABA), and others. It may be covered by patents found at [www.kenall.com/patents](http://www.kenall.com/patents). Content of specification sheets is subject to change; please consult [www.kenall.com](http://www.kenall.com) for current product details. ©2024 Kenall Mfg. Co.

A brand of **Legrand**

# HERCULUX™

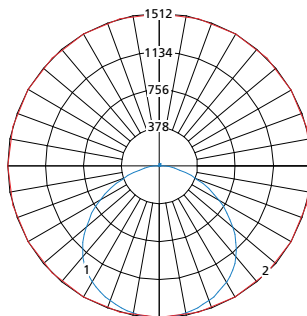
## H1212 SERIES – DEEP PROFILE HOUSING

### PERFORMANCE

Lamp Type	Initial Delivered Lumens		Input Power (W)	Drive Current (mA)	Estd. L70 LED Life (Hrs)
	@ 25°C	Efficacy (lm/W)			
25L35K	2783	99	28	47	100,000
25L40K	2783	99	28	47	100,000
25L50K	3033	108	28	47	100,000
50L35K	4648	86	54	94	85,000
50L40K	4648	86	54	94	85,000
50L50K	5066	94	54	94	85,000

Info subject to change. Visit [www.kenall.com](http://www.kenall.com) for IES files and additional information.

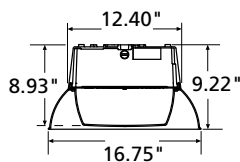
Model: H1212DSM-PP-MW-50L40K-DV



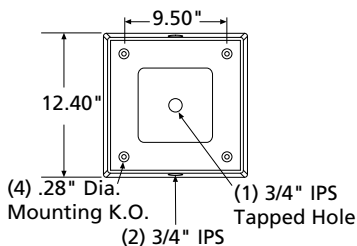
Max Candela = 1512 Located At Horizontal Angle = 0, Vertical Angle = 0  
 1 - Vertical Plane Through Horizontal Angles (0-180) (Through Max. Cd.)  
 2 - Horizontal Cone Through Vertical Angle (0) (Through Max. Cd.)

### DIMENSIONAL DATA

CROSS SECTION / DETAILS



BACK MOUNTING VIEW



[www.kenall.com](http://www.kenall.com) | P: 800-4-Kenall | F: 262-891-9700 | 10200 55th Street Kenosha, Wisconsin 53144, USA  
 This product is able to comply with the latest domestic preference legislation, such as the Buy American Act (BAA), Trade Agreement Act (TAA), Build America, Buy America Act (BABA), and others. It may be covered by patents found at [www.kenall.com/patents](http://www.kenall.com/patents). Content of specification sheets is subject to change; please consult [www.kenall.com](http://www.kenall.com) for current product details. ©2024 Kenall Mfg. Co.

A brand of **Legrand**