

# MEDMASTER™

## Patient Room Luminaires

### MAC SERIES using Indigo-Clean Technology

#### PRODUCT FEATURES:

- » Provides environmental disinfection and effective, efficient lighting performance via visible LED light
- » Dual-Mode Indigo-Clean Technology is independently tested to kill 94% of SARS CoV-2 and Influenza-A\*\*\*, in addition to MRSA
- » Single-Mode Indigo-Clean Technology is independently tested to kill harmful bacteria, such as Staph\*, including MRSA\*\*
- » Surface, recessed grid or recessed flange mount – 1'×4', 2'×2', 2'×4'
- » Ingress Barrier Door provides consistent surface for cleanability



#### PROJECT INFORMATION

Job Name \_\_\_\_\_

Fixture Type \_\_\_\_\_

Catalog Number \_\_\_\_\_

Approved by \_\_\_\_\_

#### SPECIFICATIONS

**HOUSING:** 20-gauge CRS. one-piece construction Housing Flanges – 18-gauge CRS, standard 4-piece construction, spotwelded to housing. White TGIC polyester powder coat – 5-stage pre-treatment. Salt spray test 1,000 hours. Reflectance 92%. See Ordering Options for Antimicrobial Finish.

**DOORFRAME:** Heavy duty extruded aluminum with clear satin anodized finish. Doorframe supported to housing with aircraft cables (IB-AC) to provide NSF2 listing, or an optional continuous hinged doorframe (IB-HD). Select in ordering options below. Phillips head stainless steel fasteners secure door to housing – eight (8) with IB-AC (1×4, 2×2), ten (10) with IB-AC (2×4), two (2) with IB-HD (2×2) and three (3) with IB-HD (1×4, 2×4). Extruded closed cell gasket seals doorframe to housing. Outer lens sealed to doorframe with a vinyl gasket.

**OPTICS:** Extruded high-efficiency frosted DR acrylic inner diffuser. Clear impact-resistant acrylic outer lens.

**ELECTRICAL: (Single- and Dual-Mode ICT)** Serviceable mid-power white and 405nm Indigo LED array. Available 3200K, 3700K and 4300K color temperatures with 3-step MacAdam variation allowance. Minimum 82 CRI standard. 120-277VAC and 347VAC electrical input with serviceable high power factor electronic, constant-current drivers (<10% THD, >0.90 PF). Minimum 85% driver efficiency. Standard 0-10V dimming with 1-100% range and dim-to-dark capabilities (non-dim-to-dark on Dual-Mode ICT). 330µA maximum source current. **Single-Mode ICT** provides a single, white disinfection operational mode. **Dual-Mode ICT** provides two operational modes based on room occupancy. White Disinfection Mode is a white LED array for ambient lighting plus a simultaneous low-power 405nm LED array for low-level, continuous and safe environmental disinfection. Indigo Disinfection Mode is a higher-level 405nm array for continuous safe environmental disinfection during periods of room vacancy. The operational mode is determined via internal low-voltage device based upon the input signal provided by an external control device/system, such as the [IC150](#) product. Luminaire dimming is overridden in this operational state. Refer to the [Kenall Dual-Mode ICT Control Application Guide](#) for further description.

**INSTALLATION: SURFACE MOUNT:** Four .312" diameter holes. **GRID MOUNT:** Designed for 1" and 1.5" grid. (Housing includes hanging brackets to secure housing with wire to super structure). **FLANGE MOUNT:** Yoke mounting hardware & brackets included. Install Frame and Plaster Frames both positively locates yoke brackets within ceiling opening assures alignment of fixture. Install frame has no need for drywall backing; backing is supplied on the frame brackets.

**WARRANTY:** Limited five (5) year warranty.

**LISTINGS:** Luminaire is certified to UL Standards by Intertek Testing Laboratory for Wet Location and non-IC recessed installations (G and F install types). ETL certified IP65 per IEC60598. NSF2 Splash Zone (IB-AC only). EPA Est. No. 99283-WI-1.

\* Per independent lab report #5GS-09517036476. Contact Kenall for a copy of this report.

\*\*Antimicrobial Activity of a Continuous Visible Light Disinfection System by Rutala, et. al, ID Week 2016.

\*\*\*Refer to [www.indigo-clean.com](http://www.indigo-clean.com) for details.



IB-AC ONLY

#### ORDERING INFORMATION (Ex: MAC22-G-FA-231/55C-37K8-DCC-DV-IB-AC-FS)

Model	Mounting	Diffuser	Lamp Power	Lamp Color	Driver Type	Voltage	Doorframe	Options	Accessories
		<b>FA</b>			<b>DCC</b>		<b>IB-</b>		
<b>Model</b>			<b>Lamp Power</b>				<b>Doorframe</b>		
MAC14 1'×4'			1×4				AC Ingress Barrier w/Aircraft Cables		
MAC22 2'×2'			55C 55W Single-Mode ICT				HD Ingress Barrier w/Continuous Piano Hinge (not NSF2 listed)		
MAC24 2'×4'			231/55C 55W Dual-Mode ICT						
<b>Mounting Options</b>			<b>2×2</b>				<b>Options</b>		
F Flange			55C 55W Single-Mode ICT				LEL** LED Emergency Battery Pack		
S Surface			231/55C 55W Dual-Mode ICT				AMF Antimicrobial Finish on exposed painted surfaces		
G Grid (1" and 1.5")							NLW^ 2700K White LED Night Light		
<b>Diffuser Type</b>			<b>2'×4'</b>				NLA^ Amber LED Night Light		
FA Frosted Acrylic			55C 55W Single-Mode ICT				LVC* Low Voltage Controller (Click <a href="#">here</a> for specifications)		
			82C 82W Single-Mode ICT				LVCS* Low Voltage Controller with Secondary Conduit Entry (Click <a href="#">here</a> for specifications)		
			110C 110W Single-Mode ICT				LVCD* Low Voltage Controller with Dimming (Click <a href="#">here</a> for specifications)		
			231/55C 55W Dual-Mode ICT				LVCDs* Low Voltage Controller with Dimming and Secondary Conduit Entry (Click <a href="#">here</a> for specifications)		
			34I/82C 82W Dual-Mode ICT				FS Single Fuse & Holder		
			46I/110C 110W Dual-Mode ICT						
			<b>Lamp Color</b>				<b>Accessories</b>		
			32K8 3200K / 82 CRI min.				IF† Install Frame		
			37K8 3700K / 82 CRI min.				PF† Plaster Frame		
			43K8 4300K / 82 CRI min.						
			<b>Driver Type</b>						
			DCC 0-10V Dimming Constant Current						
			<b>Input Voltage</b>						
			DV 120-277VAC, 50/60Hz						
			347 347VAC, 50/60Hz						

#### ACCESSORIES ORDERED SEPARATELY

- MPWS Low Voltage Wall Switch (Click [here](#) for Specifications)
- IC150 External Room Control System for Dual-Mode ICT Products (click [here](#) for Specifications)



www.kenall.com | P: 800-4-Kenall | F: 262-891-9701 | 10200 55th Street Kenosha, Wisconsin 53144, USA

A brand of Legrand

This product complies with the Buy American Act: manufactured in the United States with more than 50% of the component cost of US origin. It may be covered by patents found at [www.kenall.com/patents](http://www.kenall.com/patents). Content of specification sheets is subject to change; please consult [www.kenall.com](http://www.kenall.com) for current product details. ©2022 Kenall Mfg. Co.

**MEDMASTER™**  
Patient Room Luminaires  
**MAC SERIES using Indigo-Clean Technology**

**PERFORMANCE**

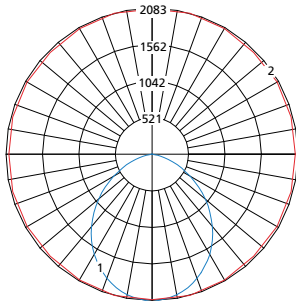
Technology	Length	Lamp Code	Lumen Output by Color (lm) <sup>1</sup>			Efficacy (lm/W)	Power Consumption <sup>2</sup>			Estd L70 LED Life (Hrs)
			32K8	37K8	43K8		Occupied (W)	LPD (W)	Unoccupied (W)	
Single-Mode ICT	1 x 4	55C	4,629	4,749	4,797	76 - 79	61	51	n/a	80,000
	2 x 2	55C	4,690	4,812	4,861	77 - 80	61	51		
	2 x 4	55C	5,759	5,908	5,968	94 - 98	61	51		
		82C	8,695	8,921	9,012	93 - 97	93	77		
		110C	10,716	10,994	11,106	88 - 91	122	101		
Dual-Mode ICT	1 x 4	23I/55C	4,629	4,749	4,797	76 - 79	61	51	29	80,000
	2 x 2	23I/55C	4,690	4,812	4,861	77 - 80	61	51	29	
	2 x 4	23I/55C	5,759	5,908	5,968	94 - 98	61	51	29	
		34I/82C	8,695	8,921	9,012	93 - 97	93	77	44	
		46I/110C	10,716	10,994	11,106	88 - 91	122	101	58	

<sup>1</sup>Lumen output is with the FA lens type. Information subject to change without notice. Visit [www.kenall.com](http://www.kenall.com) for IES files and additional information.

<sup>2</sup>Lighting Power and Energy Calculations:

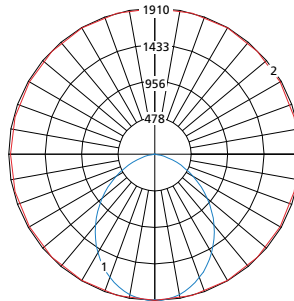
- Use **Occupied Power** for total electrical load calculations. Use this value to estimate branch circuit lighting loads.
- Use **LPD Power** for lighting power density calculations. Only the power attributed to white light is required per NEMA LSD EB 84-202X. Power used toward germicidal disinfection has been removed for this calculation.
- Use **Unoccupied** and **Occupied Power** for Energy calculations to determine the power consumed over time based on the use of the space.

Model: MAC-14-x-FA-55C-37K8-DCC-DV-IB-AC and  
MAC-14-x-FA-23I/55C-37K8-DCC-DV-IB-AC



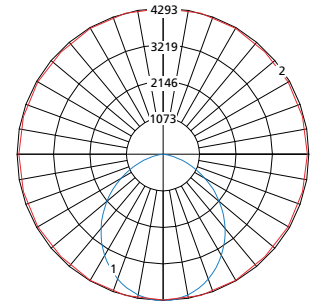
Max Candela = 2083 Located At Horizontal Angle = 75, Vertical Angle = 2.5  
1 - Vertical Plane Through Horizontal Angles (75 - 255) (Through Max. Cd.)  
2 - Horizontal Cone Through Vertical Angle (2.5) (Through Max. Cd.)

Model: MAC-22-x-FA-55C-37K8-DCC-DV-IB-AC and  
MAC-22-x-FA-23I/55C-37K8-DCC-DV-IB-AC



Max Candela = 1910 Located At Horizontal Angle = 90, Vertical Angle = 2.5  
1 - Vertical Plane Through Horizontal Angles (90 - 270) (Through Max. Cd.)  
2 - Horizontal Cone Through Vertical Angle (2.5) (Through Max. Cd.)

Model: MAC-24-x-FA-110C-37K8-DCC-DV-IB-AC and  
MAC-24-x-FA-46I/110C-37K8-DCC-DV-IB-AC



Max Candela = 4293 Located At Horizontal Angle = 75, Vertical Angle = 2.5  
1 - Vertical Plane Through Horizontal Angles (75 - 255) (Through Max. Cd.)  
2 - Horizontal Cone Through Vertical Angle (2.5) (Through Max. Cd.)



# MEDMASTER™

## Patient Room Luminaires

### MAC SERIES using Indigo-Clean Technology

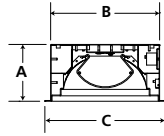
#### DIMENSIONAL DATA

##### GRID DIMENSIONAL DATA (IN INCHES)

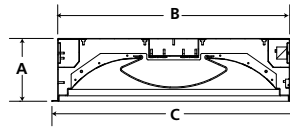
	A	B	C	D	E
1x4	5.56	10.60	11.75	46.60	47.75
2x2	6.10	22.60	23.75	22.60	23.75
2x4	6.10	22.60	23.75	46.60	47.75

#### GRID MOUNT

##### CROSS SECTION

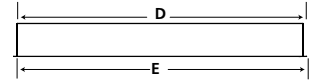


MAC14



MAC22 & MAC24

##### SIDE VIEW

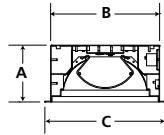


##### FLANGE DIMENSIONAL DATA (IN INCHES)

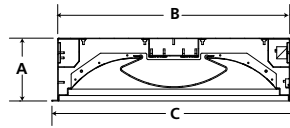
	A	B	C	D	E	F	G
1x4	5.56	10.60	11.75	46.60	47.75	30.00	5.25
Recommended Ceiling Cutout: 10.88" x 46.88"							
2x2	6.10	22.60	23.75	22.60	23.75	12.00	12.00
Recommended Ceiling Cutout: 22.88" x 22.88"							
2x4	6.10	22.60	23.75	46.60	47.75	30.00	12.00
Recommended Ceiling Cutout: 22.88" x 46.88"							

#### FLANGE MOUNT

##### CROSS SECTION

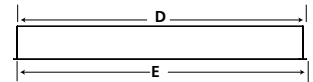


MAC14

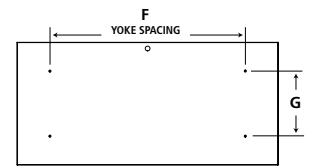


MAC22 & MAC24

##### SIDE VIEW



##### TOP VIEW

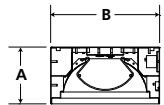


##### SURFACE DIMENSIONAL DATA (IN INCHES)

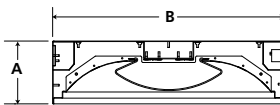
	A	B	C	D	E
1x4	5.56	10.60	30.00	5.25	46.60
2x2	6.13	22.60	12.00	12.00	22.60
2x4	6.13	22.60	30.00	12.00	46.60

#### SURFACE MOUNT

##### CROSS SECTION



MAC14



MAC22 & MAC24

##### TOP VIEW

