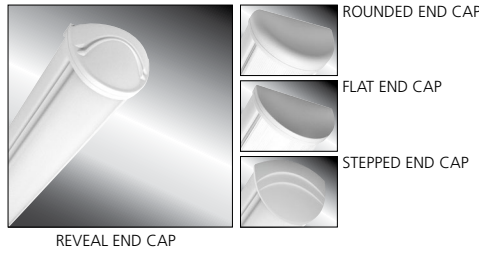


MILLENIUM STRETCH™

MLHA5 SERIES – INDIVIDUAL

Product Features:

- » Surface mount – ceiling, wall; 5"×24", 36", 48", 72" and 96"
- » Extruded aluminum housing with decorative end caps
- » Low-profile –ADA compliant
- » Peace of Mind Guarantee® against breakage



PROJECT INFORMATION

Job Name _____

Fixture Type _____

Catalog Number _____

Approved by _____

SPECIFICATIONS:

HOUSING: Marine grade aluminum. Extruded body with die-cast end caps. Housing, with end caps, post assembly TGIC polyester powder coat finished – 5-step pre-treatment. See Ordering Information for standard, optional and custom finishes.

REFLECTOR: Full reflector/wire cover – 92% reflectivity.

LENS: UV-stabilized, high impact extruded clear or pearlescent polycarbonate. Smooth exterior, linear prismatic interior. Nominal thickness .156". Lens securely positioned in body channels and end caps. Lens locked in place with tamper-resistant stainless steel Torx® T-20 with center pin fasteners and sealed with closed cell gaskets.

END CAPS: Marine grade die-cast aluminum. Four styles available: Flat, Rounded, Reveal and Stepped. Conduit and "Wiremold" ready" knockout visible only from interior of end cap (For Flat and Rounded styles only).

SOCKETS: Shock-resistant sockets with internal locking collar to ensure positive lamp retention.

HARDWARE: Stainless steel, tamper-resistant Torx® with center pin fasteners secure lens in housing body's lens channel (eight on 72" and 96" housings, four on 24", 36" and 48" housings).

ELECTRICAL: LED: Available 3500K, 4000K and 5000K color temperatures, 82 CRI. 120-277VAC and 347VAC, 50/60Hz electrical input with serviceable high power factor electronic, constant-current driver (<20% THD, >0.95 PF). Standard 0-10V dimming with 1-100% range and dim-to-dark capabilities; maximum driver source of 165µA. Optional embedded microwave motion sensor (MS) has factory default settings of 20 minute time out, dims down to 30%. LE: Class P ballasts. Fluorescent electronic 120/277/347 and dual voltage ballasts high power factor.

SENSOR & CONTROLS: Optional sensor available with compatible third party controls. To see the full list of compatible controls, [click here](#).

TEKLINK™ TL50: An independent lighting control system embedded in the luminaire, featuring its own occupancy sensor, daylight harvesting and adjustable time-out/dimming settings.

TEKLINK™ TL100: Centralized, wired zonal occupancy and closed-loop daylight harvesting control system. TL100 controllers are standalone devices and ordered separately for luminaire. [Click here for specifications](#).

INSTALLATION: Standard two-point (24" housing), four-point (36" and 48" housing) and eight-point (72" and 96" housing) mounting required for Peace of Mind Guarantee®. LED product ambient temperature is -30°C to 40°C, unless otherwise noted.

PHOTOMETRICS: Photometry tested to the IESNA LM-79-08 standard by an ILAC/ISO17025 accredited laboratory. For additional photometric data, please go to [www.kenall.com](#).

WARRANTY: Limited ten (10) year warranty for LED Lamps. [Peace of Mind Guarantee against breakage](#).

LISTINGS: Luminaire is certified to UL Standards by Intertek Testing Laboratory for Wet Location – covered ceiling mount. Corner, horizontal wall, vertical wall and pendant mount installation – Damp Location only. ETL certified IP64 in compliance with IEC 60598 – ceiling mount. ADA compliant. Luminaire tested to an IK10 impact protection rating per IEC 60068-2-75:1997-08.



In Stock SKU
MLHA5-48-F-MW-PP-45L40K-DCC-1-DV
MLHA5-48-R-MW-PP-45L40K-DCC-1-DV

ORDERING INFORMATION (Ex: MLHA5-48-F-MB-PP-45L40K-DCC-DV-FS)

Model	Length	End Cap	Finish	Lens	Lamp Qty	Lamp Type	Ballast/Driver	Circuit Qty	Voltage	Options	Accessories	TekLink	Controls Kit
MLHA5													
Length	24 2'												
	36 3'												
	48 4'												
	72 Two 3' (factory connected)												
	96 Two 4' (factory connected)												
End Caps	F Flat												
	R Rounded												
	RV Reveal												
	SP Stepped												
Finish	LG Light Gray												
	MB Matte Black												
	MW Matte White												
	CC Custom Color (Consult Factory)												
Lens	CP Clear Polycarbonate												
	PP Pearlescent Polycarbonate												
Lamp Quantity (Cross Section)†	1 One												
	2 Two												
Lamp Type	2' Lengths												
	25L35K 25 Watt 3500K LED												
	25L40K 25 Watt 4000K LED												
	25L50K 25 Watt 5000K LED												
	14 F14T5												
	17 F17T8												
	24 F24T5HO (120/277V only)												
3' Lengths	21 F21T5												
	25 F25T8												
	39 F39T5HO (120/277V only)												
4' Lengths	45L35K 45 Watt 3500K LED												
	45L40K 45 Watt 4000K LED												
	45L50K 45 Watt 5000K LED												
	28 F28T5												
	32 F32T8												
	54 F54T5HO												
	54A F54T5HO amalgam												
Ballast/Driver Type	DCC Dimming Constant Current (LED Only)												
	IS Instant Start Electronic <10% THD (T8)												
	RS Rapid Start Electronic <10% THD (T8, T5, T5HO)												
	SB Specified Ballast												
Circuit Quantity‡	1 One												
	2† Two												
Voltage	120 120 Volts												
	277 277 Volts												
	347* 347 Volts												
	DV 120-277 Volts												
Options	EL ‡ 500 Minimum Lumen Battery Pack (4' only) (90 Minutes; 32°F Starting Temperature)												
	PEL ‡ 1100 Minimum Lumen Battery Pack (90 Minutes; 32°F Starting Temperature)												
	LEL Integral 10W Emergency Battery Backup (4' length only, 0°C minimum operating temperature, n/a with 347V)												
	CDF Captive Diffuser Fasteners												
	DL Damp Location												
	FS Single Fuse & Holder												
	NAT Natatorium Environment Option												
	PH Phillips Head Fasteners												
	PM § Pendant Mount (Max. 3/8NPT stems by others; damp only)												
	MS Motion Sensor (2' and 4' LED only) (n/a with 347 Voltage Option)												
Accessories	CMB § Corner Mount Bracket (Must be ordered with DL Option)												
TekLink	TL50 ▲ TL50 Control System (n/a with 347V) (Click here for specifications)												
	TL100 TL100 Control System (Click here for specifications)												
Controls Kit	< > Factory Assigned Internal Code												
	† n/a on 2' fixtures with EL option.												
	‡ 347V n/a with EL or PEL options.												
	■ 2' Fixtures have minimum 350-450 lumen battery pack. n/a with (2) T5HO lamps.												
	● n/a on 2' fixtures, 3' fixtures with T5 or T8 lamping, or with (2) T5HO lamps.												
	‡ n/a with LED												
	§ PM and CMB not available in conjunction												
	▲ LED only. N/A with with MS or CMB options. N/A with 72" or 96" length.												



www.kenall.com | P: 800-4-Kenall | F: 262-891-9700 | 10200 55th Street Kenosha, Wisconsin 53144, USA
 This product is able to comply with the latest domestic preference legislation, such as the Buy American Act (BAA), Trade Agreement Act (TAA), Buy America, Buy American Act (BABA), and others. It may be covered by patents found at [www.kenall.com/patents](#). Content of specification sheets is subject to change; please consult [www.kenall.com](#) for current product details. ©2024 Kenall Mfg. Co.

A brand of **legrand**

MILLENIUM STRETCH™

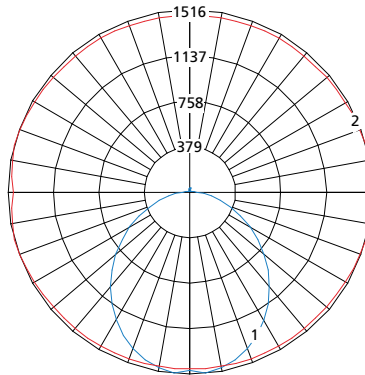
MLHA5 SERIES – INDIVIDUAL

PERFORMANCE

Length	Lamp Type	Initial Delivered Lumens			Drive Current (mA)	Estd. L70 LED Life (Hrs)
		@ 25°C	Efficacy (lm/W)	Input Power (W)		
2'	25L35K	2,374	95	25	100	150,000
	25L40K	2,531	101	25	100	150,000
	25L50K	2,531	101	25	100	150,000
4'	45L35K	4,748	97	49	100	150,000
	45L40K	5,062	103	49	100	150,000
	45L50K	5,062	103	49	100	150,000

Information above is valid for the recommended Type PP lens type and is subject to change without notice. Visit www.kenall.com for IES files and additional information.

Model: MLHA5-48-F-MW-PP-45L40K-DCC-DV

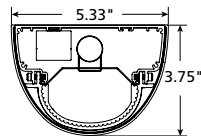


Maximum Candela = 1516 Located At Horizontal Angle = 15, Vertical Angle = 5

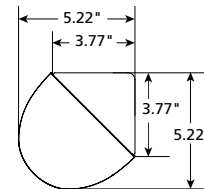
- 1 - Vertical Plane Through Horizontal Angles (15-195) (Through Max. Cd.)
- 2 - Horizontal Cone Through Vertical Angle (5) (Through Max. Cd.)

DIMENSIONAL DATA

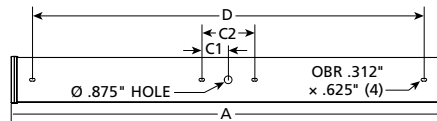
CROSS SECTION/DETAILS



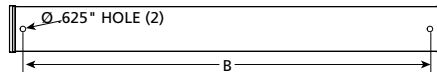
CORNER MOUNT BRACKET



SURFACE MOUNTING HOLES



PM OPTION



Nominal Two Foot Fixture Legend

LMP End Cap	A	B	C1	C2	D
T8/LED R	26.524	22.250	N/A	N/A	20.480
T8/LED F	25.308	22.250	N/A	N/A	20.480
T8/LED SP	28.131	22.250	N/A	N/A	20.480
T8/LED RV	27.674	22.250	N/A	N/A	20.480
T5 R	24.940	20.666	N/A	N/A	18.896
T5 F	23.724	20.666	N/A	N/A	18.896
T5 SP	26.547	20.666	N/A	N/A	18.896
T5 RV	26.090	20.666	N/A	N/A	18.896

Nominal Three Foot Fixture Legend

LMP End Cap	A	B	C1	C2	D
T8/LED R	38.524	34.250	3.000	6.000	32.480
T8/LED F	37.308	34.250	3.000	6.000	32.480
T8/LED SP	40.131	34.250	3.000	6.000	32.480
T8/LED RV	39.674	34.250	3.000	6.000	32.480
T5 R	36.751	32.478	2.953	5.906	30.708
T5 F	35.535	32.478	2.953	5.906	30.708
T5 SP	38.358	32.478	2.953	5.906	30.708
T5 RV	37.901	32.478	2.953	5.906	30.708

Nominal Four Foot Fixture Legend

LMP End Cap	A	B	C1	C2	D
T8/LED R	50.524	46.250	3.000	6.000	44.480
T8/LED F	49.308	46.250	3.000	6.000	44.480
T8/LED SP	52.131	46.250	3.000	6.000	44.480
T8/LED RV	51.674	46.250	3.000	6.000	44.480
T5 R	48.562	44.288	2.953	5.906	42.518
T5 F	47.346	44.288	2.953	5.906	42.518
T5 SP	50.169	44.288	2.953	5.906	42.518
T5 RV	49.712	44.288	2.953	5.906	42.518



www.kenall.com | P: 800-4-Kenall | F: 262-891-9700 | 10200 55th Street Kenosha, Wisconsin 53144, USA
 This product is able to comply with the latest domestic preference legislation, such as the Buy American Act (BAA), Trade Agreement Act (TAA), Build America, Buy America Act (BABA), and others. It may be covered by patents found at www.kenall.com/patents. Content of specification sheets is subject to change; please consult www.kenall.com for current product details. ©2024 Kenall Mfg. Co.

A brand of **legrand**