

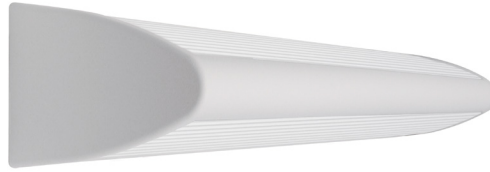
MEDMASTER™

Patient Room Luminaires

MWUD SERIES using Indigo-Clean Technology

PRODUCT FEATURES:

- » Wall-mounted, single-function luminaire with up and down lighting
- » Provides environmental disinfection and effective, efficient lighting performance via visible LED light
- » Dual-Mode Indigo-Clean Technology is independently tested to kill 94% of SARS CoV-2 and Influenza-A***, in addition to MRSA
- » Single-Mode Indigo-Clean Technology is independently tested to kill harmful bacteria, such as Staph*, including MRSA**



PROJECT INFORMATION

Job Name _____

Fixture Type _____

Catalog Number _____

Approved by _____

SPECIFICATIONS

HOUSING: Marine grade aluminum body with die-cast end caps. Housing attaches to mounted baseplate. Housing secured with countersunk fasteners. TGIC polyester powder coat – 5-stage pre-treatment. Salt spray test: 1,000 hours. Antimicrobial finish standard on exposed surfaces of installed luminaire.

BASEPLATE: 16-gauge CRS baseplate. TGIC polyester powder coat – 5-stage pre-treatment. Salt spray test: 1,000 hours; Reflectance: 92%.

LENS: UV-stabilized, high impact resistant, 100% DR frost acrylic. Smooth exterior. Nominal thickness .080". Lens securely positioned in body channels.

ELECTRICAL: (Single- and Dual-Mode ICT) Serviceable mid-power white and 405nm Indigo LED array. Available 3200K, 3700K and 4300K color temperatures with 3-step MacAdam variation allowance. Minimum 82 CRI standard. 120-277VAC and 347VAC electrical input with serviceable high power factor electronic, constant-current drivers (<10% THD, >0.90 PF). Minimum 85% driver efficiency. Standard 0-10V dimming with 1-100% range and dim-to-dark capabilities (non-dim-to-dark on Dual-Mode ICT). 165µA maximum source current. **Single-Mode ICT** provides a single, white disinfection operational mode. **Dual-Mode ICT** provides two operational modes based on room occupancy. White Disinfection Mode is a white LED array for ambient lighting plus a simultaneous low-power 405nm LED array for low-level, continuous and safe environmental disinfection. Indigo Disinfection Mode is a higher-level 405nm array for continuous safe environmental disinfection during periods of room vacancy. The operational mode is determined via internal low-voltage device based upon the input signal provided by an external control device/system, such as the [IC150](#) product. Luminaire dimming is overridden in this operational state. Refer to the [Kenall Dual-Mode ICT Control Application Guide](#) for further description.

INSTALLATION: Standard six-point wall mounting via fasteners supplied by others.

WARRANTY: Limited five (5) year LED warranty.

LISTINGS: Certified to UL standards by Intertek Testing Laboratory for Damp Locations. EPA Est. No. 99283-WI-1.

* Per independent lab report #5GS-09S17036476. Contact Kenall for a copy of this report.

**Antimicrobial Activity of a Continuous Visible Light Disinfection System by Rutala, et. al, ID Week 2016.

***Refer to www.indigo-clean.com for details.



ORDERING INFORMATION (Ex: MWUD-48-MW-55C-37K8-DIM1-DV-LVC)

Model	Length	Finish	Lamp Power	Lamp Color	Driver Type	Voltage	Options
MWUD	48				DIM1		
Nominal Length			Lamp Power		Voltage		
48 48"			55C 55W Single-Mode ICT		DV 120-277VAC		
			23I/55C 55W Dual-Mode ICT		120 120VAC		
					277 277VAC		
					347 347VAC		
Finish			Lamp Color		Options		
MW Antimicrobial Matte White			32K8 3200K / 80CRI min.		LEL [▲] 8.4W Emergency Battery Pack		
MB Antimicrobial Matte Black			37K8 3700K / 80CRI min.		ES Emergency Shut-Off Switch (120V only)		
SL Antimicrobial Silver			43K8 4300K / 80CRI min.		FS Fuse & Holder		
CC Custom Color (Consult Factory)					LVCA** Low Voltage Controller (Click here for specifications)		
					LVCD** Low Voltage Controller with Dimming (Click here for specifications)		
					TR Tamper Resistant Torx® with center pin Fastener		
					PCL* Pull Chain, Left Side (120V only)		
					PCR* Pull Chain, Right Side (120V only)		
					SW* Rocker Switch		
					(voltage-specific selection required; n/a 347V)		
					GFI** Ground Fault Outlet (120V only)		
					▲ n/a with 347V		
					* n/a with Dual-Mode ICT		
					** Not available in combination with LEL, PCL, PCR, or SW options.		

ACCESSORIES ORDERED SEPARATELY

- MPWS Low Voltage Wall Switch (Click [here](#) for Specifications)
- IC150 External Room Control System for Dual-Mode ICT Products (click [here](#) for Specifications)



www.kenall.com | P: 800-4-Kenall | F: 262-891-9701 | 10200 55th Street Kenosha, Wisconsin 53144, USA

This product complies with the Buy American Act: manufactured in the United States with more than 50% of the component cost of US origin. It may be covered by patents found at www.kenall.com/patents. Content of specification sheets is subject to change; please consult www.kenall.com for current product details. ©2022 Kenall Mfg. Co.

A brand of **legrand**

MWUD-ICT-011022

MEDMASTER™

Patient Room Luminaires

MWUD SERIES using Indigo-Clean Technology

PERFORMANCE

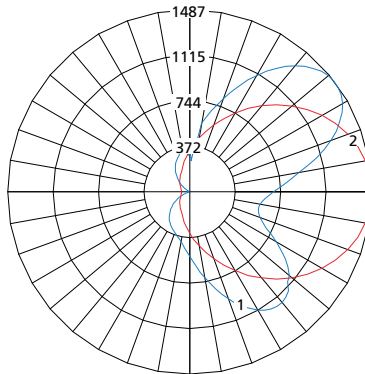
Technology	Length	Lamp Code	Lumen Output by Color (lm) ¹			Efficacy (lm/W)	Power Consumption ²			Estd L70 LED Life (Hrs)
			32K8	37K8	43K8		Occupied (W)	LPD (W)	Unoccupied (W)	
Single-Mode ICT	4'	55C	5,034	5,165	5,217	84 - 87	60	50	n/a	80,000
Dual-Mode ICT	4'	23/55C	5,034	5,165	5,217	84 - 87	60	50	29	80,000

¹Information subject to change without notice. Visit www.kenall.com for IES files and additional information.

²Lighting Power and Energy Calculations:

- Use **Occupied Power** for total electrical load calculations. Use this value to estimate branch circuit lighting loads.
- Use **LPD Power** for lighting power density calculations. Only the power attributed to white light is required per NEMA LSD EB 84-202X. Power used toward germicidal disinfection has been removed for this calculation.
- Use **Unoccupied** and **Occupied Power** for Energy calculations to determine the power consumed over time based on the use of the space.

Model: MWUD-48-Y-55C-37K8-DIM1-z and MWUD-48-Y-23/55C-37K8-DIM1-z

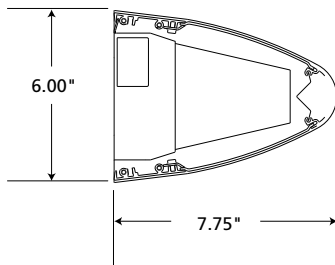


Maximum Candela = 1487 Located At Horizontal Angle = 0, Vertical Angle = 127.5

- 1 - Vertical Plane Through Horizontal Angles (0-180) (Through Max. Cd.)
- 2 - Horizontal Cone Through Vertical Angle (127.5) (Through Max. Cd.)

DIMENSIONAL DATA

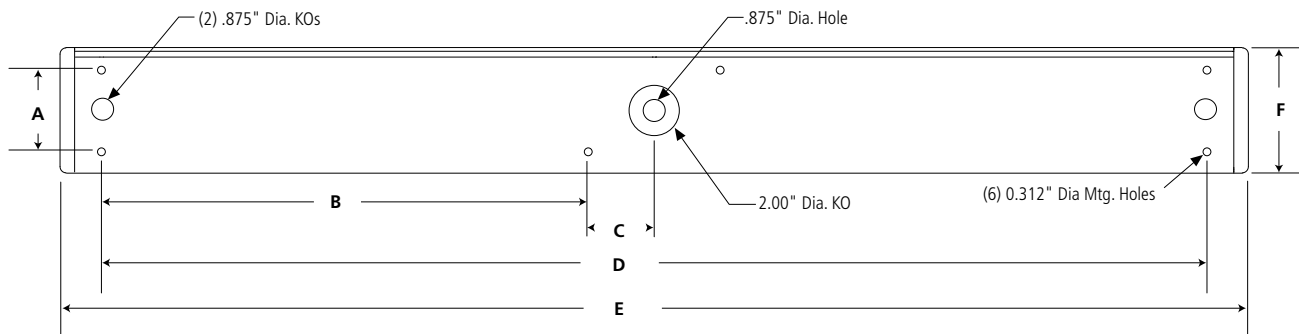
SIDE VIEW



DIMENSIONAL DATA (IN INCHES)

	A	B	C	D	E	F
48"	3.25	19.38	2.63	44.00	49.61	6.00

BACK VIEW



www.kenall.com | P: 800-4-Kenall | F: 262-891-9701 | 10200 55th Street Kenosha, Wisconsin 53144, USA

A brand of **legrand**

This product complies with the Buy American Act: manufactured in the United States with more than 50% of the component cost of US origin. It may be covered by patents found at www.kenall.com/patents. Content of specification sheets is subject to change; please consult www.kenall.com for current product details. ©2022 Kenall Mfg. Co.