



**TekDek™**  
*Lighting for Parking*



Transportation  
Parking and Controls

TR



## **TekDek™: Delivering Lumens, Reducing Glare**

In the same way that Solid State Lighting has revolutionized the entire lighting industry, TekDek™ LED Luminaires have revolutionized parking garage lighting. Kenall led the competition by designing TekDek™, a best-in-class parking luminaire that recognizes and remediates hazardous glare, keeping drivers and pedestrians safe and secure. TekDek creates the brighter, more secure parking environments that patrons seek and parking professionals demand. The TekDek series offers a range of outputs, which enables parking professionals to balance footcandle requirements, glare control and excellent value.

*Challenging parking applications... Demand Kenall.*

Front cover: Photo features TekDek™ luminaires with TekLink™ in application at Virginia Commonwealth University, Richmond, VA.

## **Table of Contents**

Your Parking Lighting Must Evolve – Here’s Why	3
TekDek Enhances Student Safety, Security at VCU	4-5
Functional, Thoughtful Design and a Range of Outputs	6-7
Flexible Mounting Types	8
Installation and Maintenance	9
Lighting Tailored to the Needs of the Space	10-11
Versatile Distribution Options	12
Type II Distribution for Drive Lane Retrofits	13
TekLink™ Lighting Controls Fit for Any Budget	14-19
Completing the Series: SenScape™, TopDek™ and Post Top™	20
Complementary Parking Products	21
TekDek Performance Listings	22
Warranties and Lighting Facts	23



## **TekDek: A Story of Firsts**

- **FIRST** with glare control in parking garage applications
- **FIRST** parking garage product to achieve 100 lm/w
- **FIRST** parking garage product to achieve 120 lm/w
- **FIRST** parking garage product to achieve 150 lm/w
- **NOW, FIRST** with a Peace of Mind Guarantee® on TekDek luminaires with embedded sensor



*When you see this logo treatment, it conveys Kenall's position as a market leader in the design and manufacture of LED lighting and controls for challenging applications.*



# Your Parking Lighting Must Evolve – Here’s Why

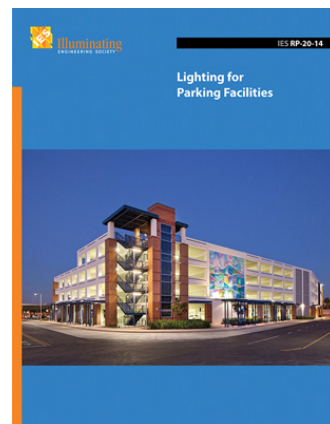
The advent of energy efficient, solid state lighting is driving new mandates and standards pertaining to lighting and controls across the parking industry. Now, thanks to incentives and rebates from participating utilities, there has never been a better time to upgrade to LED.

## Standards in the Lighting Industry

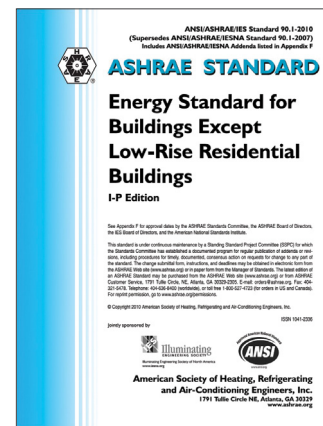
- 2013 Title 24, Part 6 Building Energy Efficiency Standards (California)
- ASHRAE 90.1 Energy Standards
- IES RP 20: Lighting for Parking Facilities
- Green Parking Council: Green Garage Certification



*Title 24, Part 6 Building Energy Efficiency Standards (California)*



*IES RP 20: Lighting for Parking Facilities*



*ASHRAE 90.1 Energy Standards*



www.kenall.com

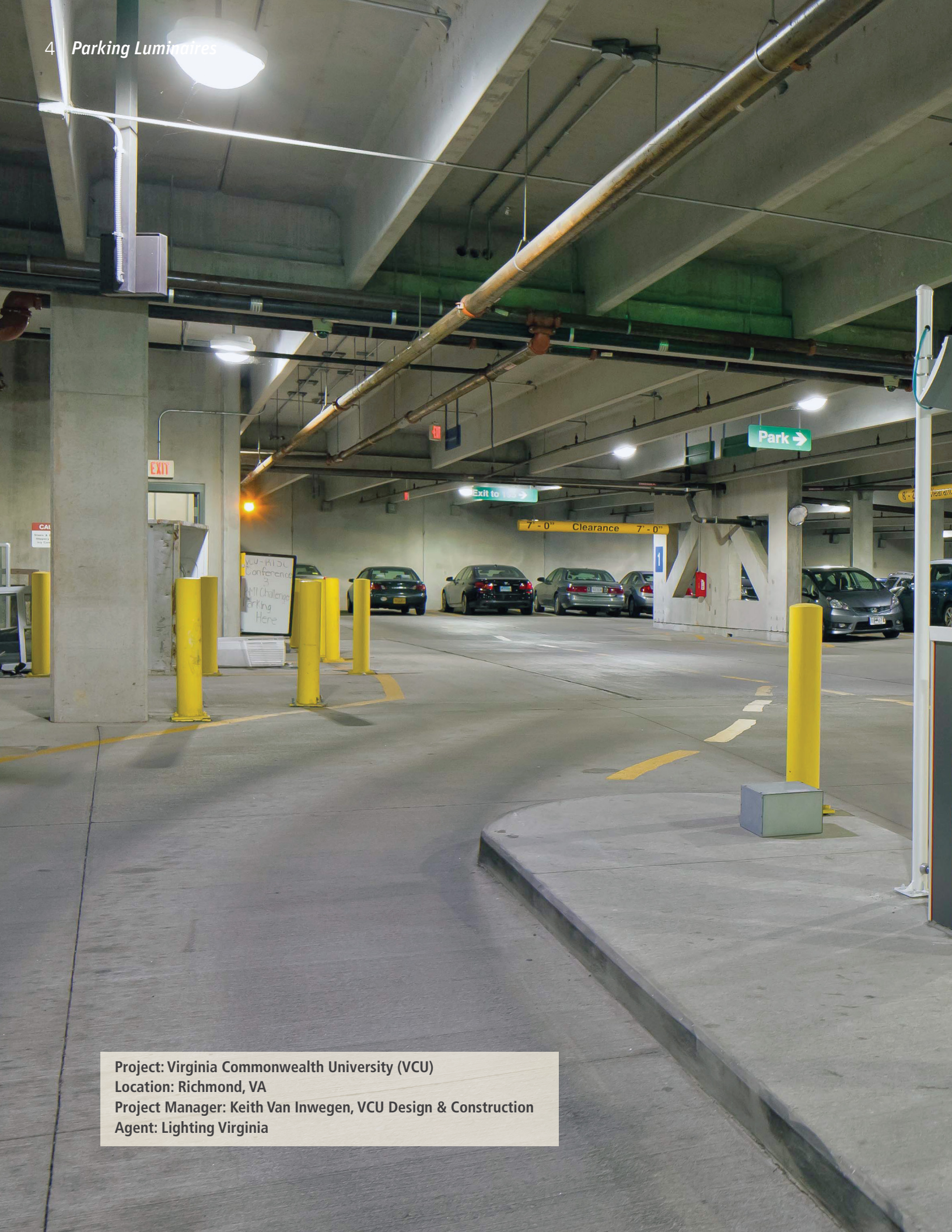
P: 800-4-Kenall

Email: info@kenall.com

12020 55th Street Kenosha, WI 53144

The Kenall product shown on this page is designed and manufactured in the USA with components purchased from US suppliers, and meets the Buy American requirements under the ARRA. Kenall has not determined the origin of its domestically purchased components or the subcomponents thereof.



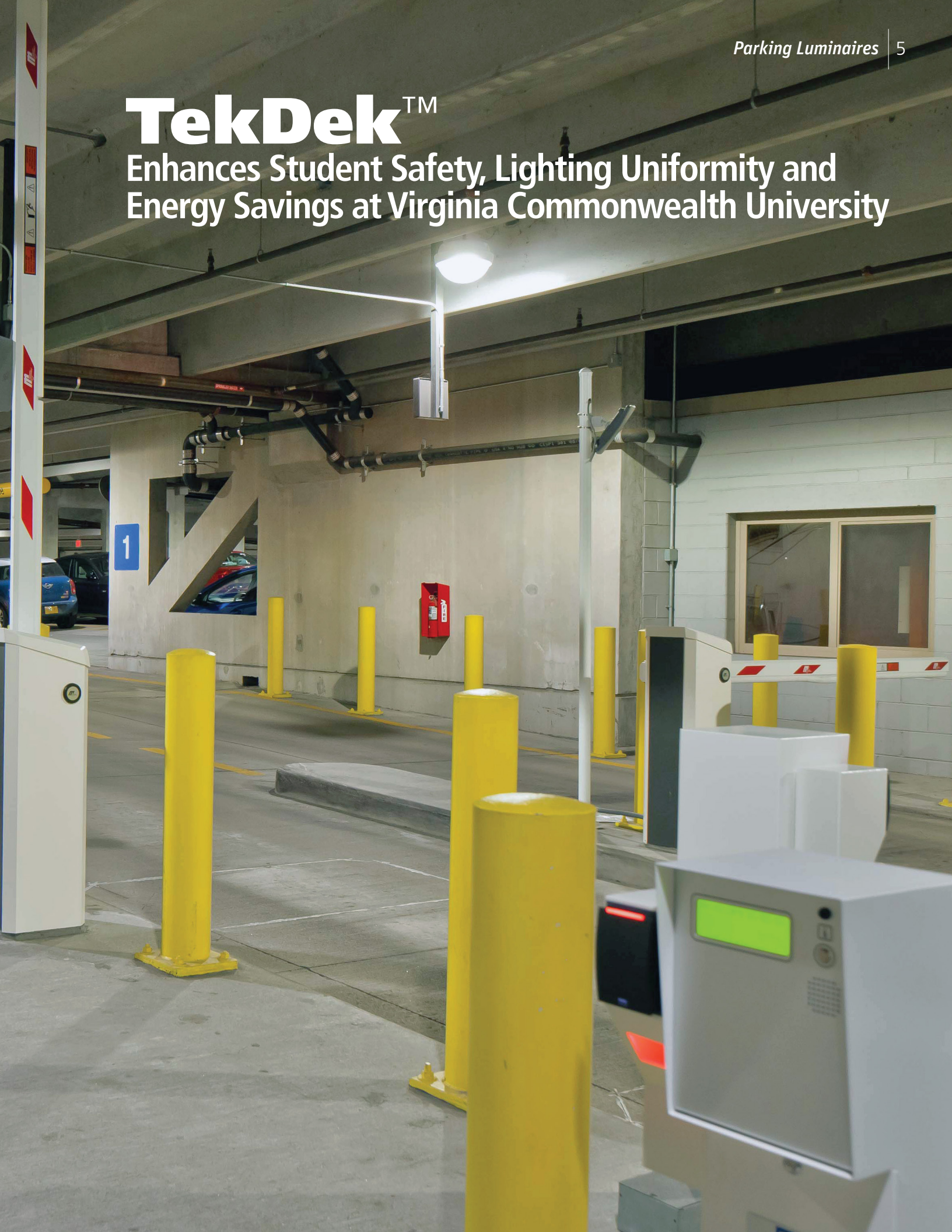


**Project:** Virginia Commonwealth University (VCU)  
**Location:** Richmond, VA  
**Project Manager:** Keith Van Inwegen, VCU Design & Construction  
**Agent:** Lighting Virginia



# TekDek™

Enhances Student Safety, Lighting Uniformity and Energy Savings at Virginia Commonwealth University





# TekDek™ – Functional, Thoughtful Design

Kenall engineers and designers have developed an innovative, patented design that delivers superior glare control and a variety of lumen packages for today's parking structure. A specially-designed textured lens, working in conjunction with secondary optics, reduces disabling and discomfort glare, while also providing uplight and enhancing vertical illumination. When paired with Kenall's TekLink™ lighting control system, TekDek delivers the right amount of light exactly when and where it's needed.



- **Glare Reduction**

Kenall's innovative textured lens provides unprecedented glare reduction—greatly enhancing both vehicle and patron safety while preserving the optical distribution pattern.

- **Die-cast Housing**

TekDek's marine-grade, die-cast aluminum housing provides maximum strength and durability. To maximize LED life, the housing design also includes a thermal air gap between the fixture's temperature-sensitive drivers and its heat emitting components.

- **Vertical Footcandles**

Kenall's parking garage luminaires provide double—often triple—the vertical footcandles of typical LED parking garage lighting.

- **Uplight Feature**

TekDek provides a highly desirable uplighting component to eliminate the problematic "cave effect" commonly found in traditional parking decks.

- **Embedded Microwave Sensor**

Unaffected by line of sight issues, the internal, embedded sensor provides a consistent coverage pattern. The system antenna is concealed within the housing making it impervious to vandalism. Adjustable sensitivity settings are also available via remote control.

- **Sealed Optics**

The lens is sealed, gasketed and IP65 rated.

- **Traditional Design Aesthetic**

The TekDek luminaire delivers an aesthetically soothing feel with a classic architectural look.

Design Patent No. D639.996S  
US D707387 S1  
US 8905589 B2  
The optical patent is pending:  
US 20120176792 A1



POWER SYSTEMS



Polycarbonate lens with  
DTS mount only



# The **TekDek™** Series: Lumens Tailored to Fit Your Needs

The TekDek™ Series offers four standard outputs and two base models, which allows specifiers to tailor light levels to the specific lumen/efficiency requirements and budget parameters of a project.

## TekDek™ Light Output

TD17

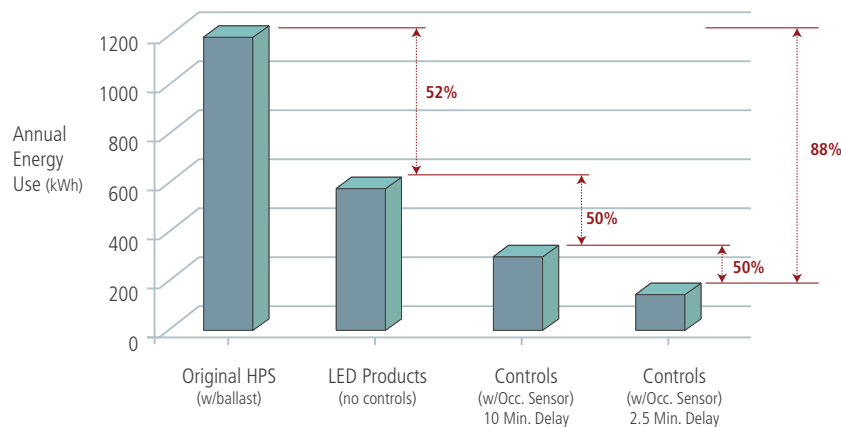
Lamp Power (W)	Initial Delivered Lumens (lm)	Efficacy (lm/W)	Input Power (W)	Estimated L70 Lifetime (hrs)
30	4,006 - 5,350	118-157	34	200,000
47	5,557 - 8,269	103-153	54	175,000
72	7,618 - 11,346	98-147	77	150,000
94	9,721 - 14,681	93-140	106	125,000

TD17B

Lamp Power (W)	Initial Delivered Lumens (lm)	Efficacy (lm/W)	Input Power (W)	Estimated L70 Lifetime (hrs)
33	3,953-5,036	101-129	39	100,000
52	4,394 - 6,261	74-106	59	90,000

## A Range of Outputs for Safety, Security & Savings

Annual Energy Usage Based on Various Lighting and Control Scenarios



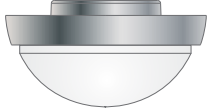
Source: USDOE Gateway Demonstration Project- LED Conservation with Occupancy Sensor Controls at the U.S. Department of Labor HQ Garage, Washington,DC





# TekDek™ Flexible Mounting Types

Because no two installations are exactly alike, TekDek luminaires are available with a range of mounting options and accessories.



**Direct-to-Surface Mount (DTS)\***

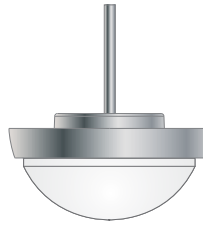
Secures the fixture directly to the ceiling via a simple and secure four-hole mounting plate.

\*Required for Peace of Mind Guarantee®



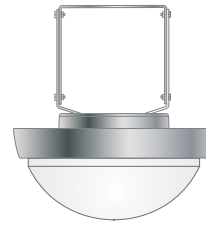
**Quick Mount (QM)**

Includes an integrated hanger bracket to hold the fixture, facilitating ease of installation and maintenance. The quick mount uses a simple twist-and-click motion to set the fixture into place.



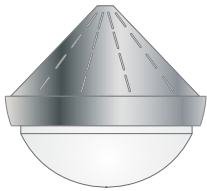
**Pendant Mount (PM)**

For use whenever an aesthetically pleasing, suspended configuration is desired. Pendant by others.



**Trunnion Mount (TK)**

A common mounting option for use when a suspended configuration with additional support is desired.



**Bird Guard (BG)**

Available for both the pendant and trunnion mounts, the bird guard protects the fixture from birds nesting in exposed areas.



**Bird Guard (BG)**

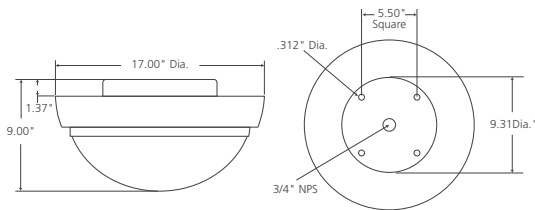
Available for both the quick and direct-to-surface mounts, the bird guard protects the fixture from birds nesting in exposed areas.



**Debris Shield (DS)**

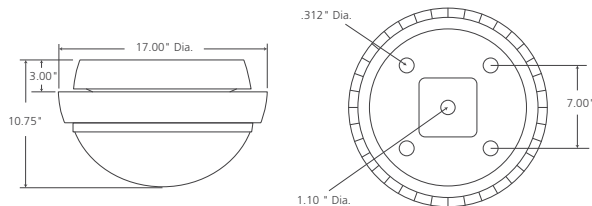
An optional debris shield protects against debris accumulation.

## TekDek™ Dimensional Drawings



**TD17 Standard Construction**

Product built as above under all configurations, except as noted for options using A1 Construction (see figure to the right).



**A1 Construction**

Product built as A1 when ordered with TekLink™, TL1000 (w/o sensor), TL2000 (w/o sensor), LEL, GTD and 480V options.







# TekDek™ Lighting Tailored to Your Needs

## TekDek with Type 5N Distribution



Charging Station



Payment Stations



Elevator Landings



Entrances/Exit

TD17

Delivered Lumens: 4,287 – 14,681lm

Lamp Power: 30 – 94 W

Efficacy: 126 – 139 lm/w



Photo for illustrative purposes only, actual products may vary.



www.kenall.com

P: 800-4-Kenall

Email: info@kenall.com

10200 55th Street Kenosha, WI 53144

The Kenall product shown on this page is designed and manufactured in the USA with components purchased from US suppliers, and meets the Buy American requirements under the ARRA. Kenall has not determined the origin of its domestically purchased components or the subcomponents thereof.



**TekDek or TekDek Base with Type 5S Distribution**



**Parking Areas**

**TD17**

Delivered lumens: 4,006–13,619 lm  
Lamp Power: 30–94 W  
Efficacy: 118–128 lm/w

**TD17B**

Delivered lumens: 3,953–5,810  
Lamp Power: 33W, 52W  
Efficacy: 98–101 lm/w

**TekDek or TekDek Base with Type 2 Distribution**



**Drive Lanes**

**TD17**

Delivered lumens: 5,557–12,013 lm  
Lamp Power: 103–113 W  
Efficacy: 47–94 lm/w

**TekDek Base with Type 5N Distributon**



**Ramps**

**TD17B**

Delivered lumens: 4,260–6,261 lm  
Lamp Power: 33W, 52W  
Efficacy: 74–129 lm/w

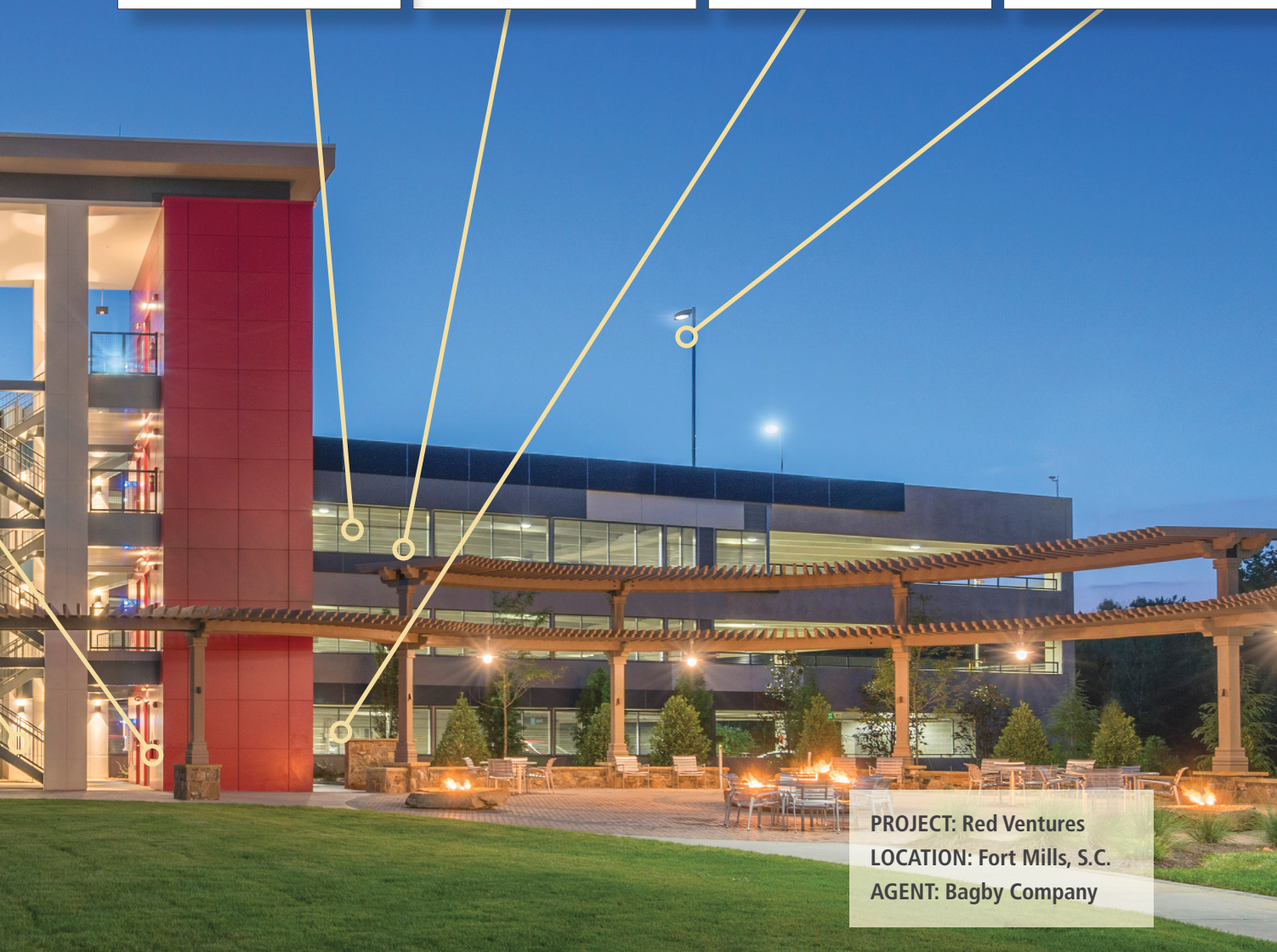
**TopDek**



**Top Deck of Garage**

**TPD23**

Delivered lumens 9,424–37,279 lm  
Lamp Power: 92–300W  
Efficacy 70–149 lm/w



**PROJECT:** Red Ventures  
**LOCATION:** Fort Mills, S.C.  
**AGENT:** Bagby Company



www.kenall.com

P: 800-4-Kenall

Email: info@kenall.com

10200 55th Street Kenosha, WI 53144

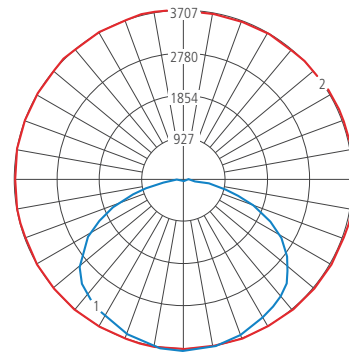
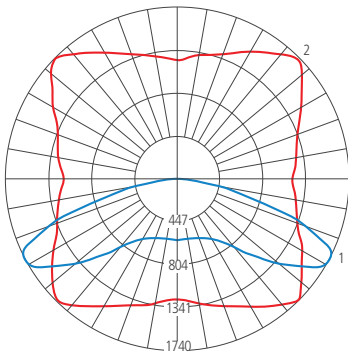
The Kenall product shown on this page is designed and manufactured in the USA with components purchased from US suppliers, and meets the Buy American requirements under the ARRA. Kenall has not determined the origin of its domestically purchased components or the subcomponents thereof.

# TekDek™: Versatile Distribution Options

Traditionally, LED lighting in parking garages provided no uplight, creating "cave effect" illumination—distributing light directly beneath the fixture while ignoring peripheral areas—creating dark corners and dim ceilings. Kenall's TekDek LED offers a range of illumination patterns, including two IES Type 5 distributions to address a majority of applications, as well as a Type 2 distribution for mounting over drive lanes, and two unique house-side shield options.

**Type 5S** Commonly used over parking bays where evenly distributed light is required, Type 5S produces a square distribution, delivering intensity at all angles and providing impressive uniformity.

**Type 5N** Type 5N produces a narrow, round distribution, delivering light intensity at all angles, providing impressive uniformity.



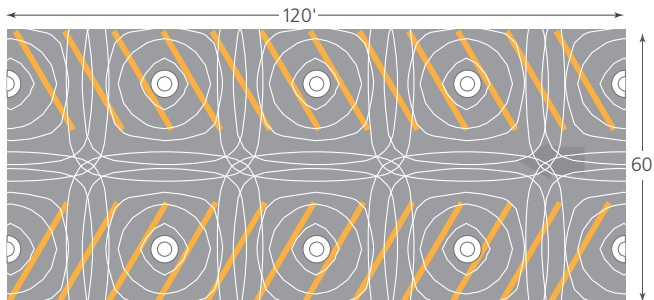
## Type 5S

Open garage areas  
Porticos  
Transportation platforms

## Type 5N

Garage payment locations  
Garage entrances & exits  
High ceiling areas  
Gas station canopies

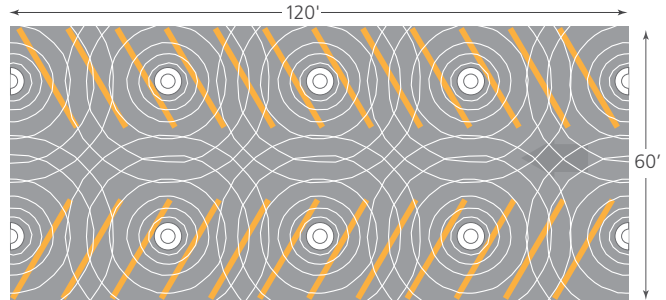
**TD17 Type 5S Optic Mounted Over Parking Bays**



8 Fixtures @ 30' Spacing  
10' Ceilings  
Fixtures mounted 8'.3" from floor

Avg f/c	4.1
Min f/c	2.2
Uniformity	2:1
Reflectances (p) 20/20/10	
TLLF	0.8

**TD17 Type 5N Optic Mounted Over Parking Bays**



8 Fixtures @ 30' Spacing  
10' Ceilings  
Fixtures mounted 8'.3" from floor

Avg f/c	4.5
Min f/c	1.7
Uniformity	3:1
Reflectances (p) 20/20/10	
TLLF	0.8

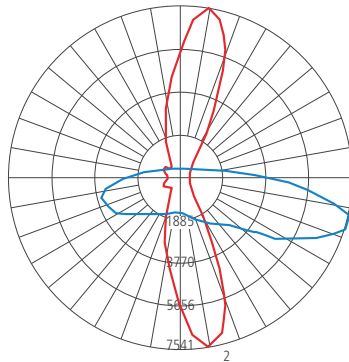




# Type II Distribution: Energy Savings for Drive Lane Installs

When drive lane mounting is an option, you can reduce your luminaire count by up to 38% using TekDek's Type 2 distribution. Reduce glare, put light where it's needed and still reduce input wattage, resulting in a potential energy savings of up to 71% (over HID options).

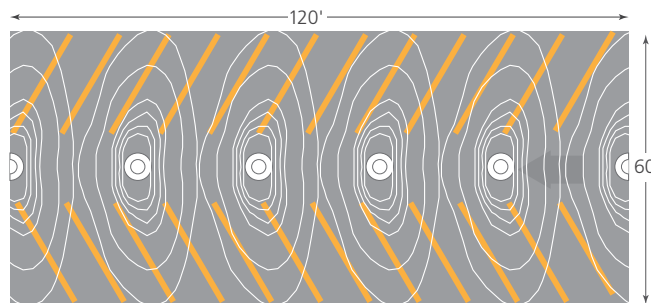
**Type 2** TekDek's Type 2 optic is ideal for use in drive lane installations resulting in substantially reduced installation cost and significant energy savings.



## Type 2

- Garage drive lanes
- Covered pedestrian walkways
- Pedestrian paths in garage

TD17 Type II Optic Mounted Over Drive Lanes



5 Fixtures @ 24' Spacing

Avg f/c	3.4
Min f/c	1.3
Uniformity	7:1
Reflectances (p)	20/20/10
TLLF	0.8



www.kenall.com

P: 800-4-Kenall

Email: info@kenall.com

10200 55th Street Kenosha, WI 53144

The Kenall product shown on this page is designed and manufactured in the USA with components purchased from US suppliers, and meets the Buy American requirements under the ARRA. Kenall has not determined the origin of its domestically purchased components or the subcomponents thereof.







## TekDek™ A Full Range of Lighting

TekDek luminaires are commonly used in parking applications, but thanks to a range of lumen packages, a tightly-sealed housing, and a Peace of Mind Guarantee® (when specified with the polycarbonate lens and DTS mounting) they are a perfect fit for a variety of applications:

- *High/Low Bay*
- *Canopy*
- *Transit*
- *Cold storage*





# TekLink™ A Full Range of Lighting Control Systems

Kenall's TekLink™ series is a portfolio of control systems with a range of options ideal for parking garages, parking lots, manufacturing facilities, warehouses, stairwells and multi-purpose rooms. With five systems—two that are cloud based—and a variety of available options, Kenall has a lighting control system for your unique application.

## Integrated Solutions for Any Budget

### TL50

Remote Controller



TekDek™



#### System Features

- Occupancy detection
- Open loop daylighting harvesting
- Settings configurable via remote controller

### TL100

Controller



Sensor



TekDek™



#### System Features

- Zonal occupancy detection
- Centralized luminaire control
- Closed loop daylight harvesting
- One button commissioning

### TL1000/TL2000



#### System Features

- Web based user interface
- Wired and wireless options
- Email and text alerts
- Power monitoring
- Data reporting

## Kenall TekLink Control System Overview

Features	TL50	TL100	TekLink Cloud	
			TL1000	TL2000
Sensor Technology	Microwave/Infrared	Infrared/Ultrasonic	Infrared/Microwave	Infrared/Microwave
Wireless Communication				√
Adjustable Occupancy Time-Out	√	√	√	√
Daylight Feedback	√	√	√	√
Adjustable Dim-Level	√	√	√	√
Zonal Control		√	√	√
One Touch Light Level Commissioning*		√	√	√
L70 Detection*		√	√	√
Scheduling			√	√
Reporting			√	√

\*Patent No: US 20120153840



www.kenall.com

P: 800-4-Kenall

Email: info@kenall.com

10200 55th Street Kenosha, WI 53144

The Kenall product shown on this page is designed and manufactured in the USA with components purchased from US suppliers, and meets the Buy American requirements under the ARRA. Kenall has not determined the origin of its domestically purchased components or the subcomponents thereof.



# TekLink™ TL50: Individually controlled LED luminaires with embedded sensor

TekLink™ TL50 is a lighting control system integrated into a single luminaire. The control system coordinates the individual luminaires light output based on daylight contribution and/or occupancy detection. TL50 offers the ability to meet ASHRAE 90.1-2010 requirements with select sensors, and is compatible with Kenall's full parking series.



**TekDek™**  
Parking Garage



**SenScape™ SPG18**  
Parking Garage

**NEW**



**TopDek Post Top™**  
Surface/Lot



**TopDek™**  
Parking Surface

**System Features:**

- Occupancy Detection
- Open Loop Daylight Harvesting
- Adjustable Time-Out
- Adjustable Bi-level Dimming



# TekLink™ TL100: Zonal, wired lighting system with centralized luminaire control

TekLink™ TL100 coordinates luminaire light output based on daylight contribution and occupancy detection. The control system offers a choice of four different programs, each with a unique way of handling the system's occupancy detection and response to daylight.



### Remote Sensor

- Strategically placed sensors trigger multiple luminaires
- Lockable, IP65 rated enclosure



### Controller

- Utilize up to six sensors per control module
- Ability to control multiple luminaires
- Interconnect multiple control modules for increased zone size
- L70 status indicator (patented)
- Closed loop daylight harvesting
- Lockable, IP65 rated enclosure
- Four selectable system programs

### Luminaires



**TekDek™**  
Parking Garage



**TopDek™**  
Parking Surface



**TopDek™** Post Top  
Surface/Lot

### System Features:

- Zonal occupancy detection
- L70 status indicator (patented)
- Sweep-off and over-ride ON
- 'Safe on' failure mode
- One-button commissioning
- Closed loop daylight harvesting

### System Programs:

- On – Off daylighting (exterior)
- On – Dim daylighting (interior)
- Occupancy only (stairwell)
- Inverse daylighting (vehicle entryways)



# TekLink™ TL1000 and TL2000: Wired and wireless, cloud-based lighting control systems

Sophisticated, yet easy to use, TekLink TL1000 and TL2000 are adaptive lighting control systems that feature robust scheduling and reporting capabilities.

### Luminaire With Integral Controller

- Controls luminaire light output via wired or wireless (900 MHz) networks
- Continuous sensing, processing and measuring of data
- Embedded sensor design



**System Features**

- Cloud-based, wired or wireless system
- User friendly, graphical interface
- Flexible system configuration; user defined access levels
- 900 MHz to penetrate concrete and rebar
- Robust scheduling capabilities
- Real-time monitoring, measurement and recording
- Automated system alerts
- Ease of commissioning



# Completing the Parking Series

Kenall offers a comprehensive series of luminaires to address a variety of needs in your project, including our **NEW SenScape SPG18**, which, like the TekDek, can be used in a broad range of applications.



**NEW**



### SenScape™ (SPG18 Series)

- Delivered lumens 4,000 – 10,500 lm
- Lumens per watt: 100 – 120 lm/W
- Marine-grade die cast aluminum housing
- Textured tertiary lens for glare reduction; eliminates the 'cave-effect'
- Desirable upright; up to 10%
- IP65 Rated Construction
- Embedded microwave sensor offers an industry exclusive Peace of Mind Guarantee®
- Optical patterns designed specifically for covered parking applications
- Compatible with TekLink™ lighting control systems

Nominal Size: 18" Diameter  
Installation Types: Surface, Pendant, Trunnion, Quick Mount

### TopDek™ (TPD23 Series)

- Delivered lumens 9,424 – 30,443 lm
- Input watts: 92 – 300 W
- Lumens per watt: 70 – 109 lm/W
- Type II, III, IV, V-Narrow Round, and V-Wide Square distributions
- Die-cast, marine-grade aluminum housing
- Textured acrylic or polycarbonate flat lens for superior glare reduction
- Sealed optics with IESNA full cutoff distribution
- Internal house-side shield reduces wind loading
- Compatible with TekLink™ lighting control systems

Nominal Size: 23" Diameter  
Installation Types: Pole mounted (pole by others)

### TopDek™ Post Top (TPDPT Series)

- Delivered lumens 6,693 – 34,361 lm
- Input watts: 100 – 408 W
- Lumens per watt: 48 – 114 lm/W
- Type II, III, IV, V-Narrow Round, and V-Wide Square distributions
- Die-cast, marine-grade aluminum housing
- Textured acrylic or polycarbonate flat lens for superior glare reduction
- Sealed optics with IESNA full cutoff distribution
- Internal house-side shield reduces wind loading
- Compatible with TekLink™ lighting control systems

Nominal Size: 26" Diameter  
Installation Types: Pole mounted (pole by others)





# Complementary Parking Products

Kenall offers a comprehensive series of luminaires to address a variety of needs throughout your parking structure.

## Stairwell



Millenium Stretch™



EnviroSeal™



Millenium OS™



## Building Facade



Millenium™



Millenium FreeScale™



Millenium Auracyl™



Millenium Finite™

## Exit/Egress



Millenium Metrex™



METEL



MLER



METEL



METER



# TekDek™ Performance Listings

## IP EXPLANATION OF "INGRESS PROTECTION" IP NUMBERS for Degrees of Protection for Sealed Luminaires

Example:  
**IP65**

### DEGREES OF PROTECTION INDICATED BY THE FIRST CHARACTERISTIC NUMERAL

Numeral	Short Description	Brief details of objects which will be "excluded" from the enclosure
0	Non-protected	No special protection
1	Protected against solid objects greater than 50 mm	A large surface of the body, such as a hand (but no protection against deliberate access). Solid objects exceeding 50 mm in diameter.
2	Protected against solid objects greater than 12 mm	Fingers or similar objects not exceeding 80 mm in Solid objects exceeding 12 mm in diameter.
3	Protected against solid objects greater than 2.5 mm	Tools, wires, etc., of diameter or thickness greater than Solid objects exceeding 2.5 mm in diameter.
4	Protected against solid objects greater than 1.0 mm	Wires or strips of thickness greater than 1.0 mm. Solid objects exceeding 1.0 mm in diameter.
5	Dust-protected	Ingress of dust is not totally prevented but dust does not enter in sufficient quantity to interfere with satisfactory operation of the equipment.
6	Dust-tight	No ingress of dust

**IP65**

### DEGREES OF PROTECTION INDICATED BY THE SECOND CHARACTERISTIC NUMERAL

Numeral	Short Description	Brief details of objects which will be "excluded" from the enclosure
0	Non-protected	No special protection
1	Protected against dripping water	Dripping water (vertically falling drops) shall have no harmful effect.
2	Protected against dripping water when tilted up to 15°	Vertically dripping water shall have no harmful effect when tilted up to 15° when the enclosure is tilted at any angle up to 15° from its normal position.
3	Protected against spraying water	Water falling as a spray at an angle up to 60° from the vertical shall have no harmful effect.
4	Protected against splashing water	Water splashed against the enclosure from any direction shall have no harmful effect.
5	Protected against water jets	Water projected by a nozzle against the enclosure from any direction shall have no harmful effects.
6	Protected against heavy seas	Water from heavy seas or water projected in powerful jets shall not enter the enclosure in harmful quantities.
7	Protected against the effects of immersion	Ingress of water in a harmful quantity shall not be possible when the enclosure is immersed in water under defined conditions of pressure and time.
8	Protected against submersion	The equipment is suitable for continuous submersion in water under conditions which shall be specified by the manufacturer.  NOTE – Normally, this will mean that the equipment is hermetically sealed. However with certain types of equipment it can mean that water can enter but only in such a manner that it produces no harmful effects.

NOTE: The author thanks the Internal Electrotechnical Commission (IEC) for permission to reproduce definitions for IP65 from its International Standard IEC 60598. All such extracts are copyright of IEC, Geneva, Switzerland. All rights reserved. Further information on the IEC is available from [www.iec.ch](http://www.iec.ch). IEC has no responsibility for the placement and context in which the extracts and contents are reproduced by the author; nor is IEC in any way responsible for the other content or accuracy therein.



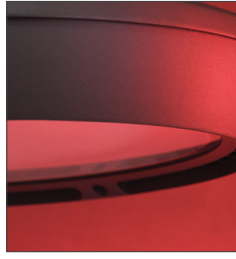
Commission Electrotechnique Internationale  
International Electrotechnical Commission  
Международная электротехническая комиссия



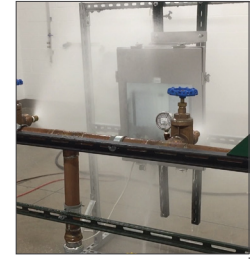


# State-of-the-art, certified testing facility

Kenall is equipped with a state-of-the-art certified safety laboratory, providing comprehensive in-house testing capabilities:



Thermal Testing



Ingress Protection Testing

## Kenall Warranty Information



Polycarbonate Lens

Kenall is pleased to be able to offer our exclusive Peace of Mind Guarantee® on select luminaires. Kenall's Peace of Mind Guarantee is available when a textured polycarbonate lens (TP) is selected and ordered, and when installed according to instructions.



POWER SYSTEMS

Kenall promises to stand behind our parking luminaires. Our commitment to excellence enables us to offer a 10-year limited product warranty on select parking products.

For detailed, product-specific warranty information, please visit our website at [www.kenall.com](http://www.kenall.com).

## LED Lighting Facts — Department of Energy LED Quality Advocate Program For LED Luminaires

As a member of the Department of Energy's LED Quality Advocates, Kenall Manufacturing has pledged to include the Lighting Facts label in conjunction with our LED luminaires. The label reports product performance results in five areas from actual test data\* in accordance with industry standards measuring photometric performance of LEDs:

- Luminaire light output
- Efficacy (lumens per watt)
- Measured power (watts)
- Correlated Color Temperature (CCT)
- Color Rendering Index (CRI)

\* Luminaire measurements have been standardized with the issuance of the IESNA Standard LM-79-2008 test procedure.



Kenall Manufacturing is a registered Lighting Facts Product Partner. For more information about this program or for copies of our Lighting Fact Labels please contact Kenall at [info@kenall.com](mailto:info@kenall.com), or visit us on the web at [www.kenall.com](http://www.kenall.com)

Kenall Lighting

<b>Light Output (Lumens)</b>	<b>7256</b>
<b>Watts</b>	<b>53.95</b>
<b>Lumens per Watt (Efficacy)</b>	<b>134.49</b>
<b>Color Accuracy</b>	
Color Rendering Index (CRI)	<b>75</b>
<b>Light Color</b>	
Correlated Color Temperature (CCT)	<b>4907 (Daylight)</b>
<b>Warranty**</b>	<b>Yes</b>

All results, except LED Lumen Maintenance, are according to IESNA LM-79-2008: Approved Method for the Electrical and Photometric Testing of Solid-State Lighting. The U.S. Department of Energy (DOE) verifies product test data and results.

\*\* See [www.lightingfacts.com/products](http://www.lightingfacts.com/products) for details.



[www.kenall.com](http://www.kenall.com)

P: 800-4-Kenall

Email: [info@kenall.com](mailto:info@kenall.com)

10200 55th Street Kenosha, WI 53144

The Kenall product shown on this page is designed and manufactured in the USA with components purchased from US suppliers, and meets the Buy American requirements under the ARRA. Kenall has not determined the origin of its domestically purchased components or the subcomponents thereof.



10200 55th Street  
Kenosha, WI 53144  
Tel: 262-891-9700  
[www.kenall.com](http://www.kenall.com)

©2017 Kenall Mfg. Co.  
All rights reserved.  
L10075-060617