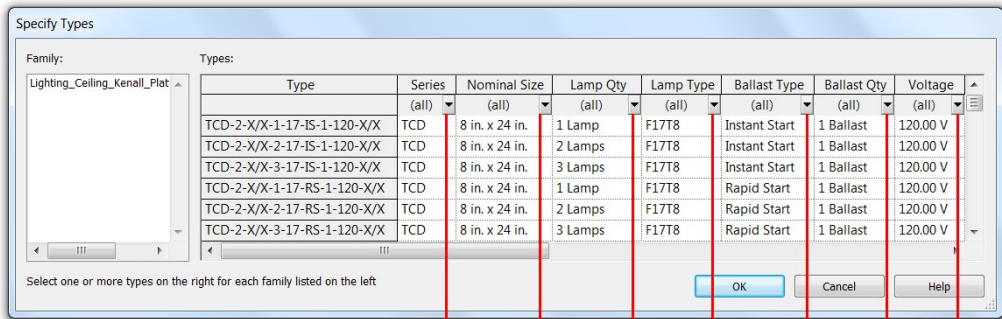
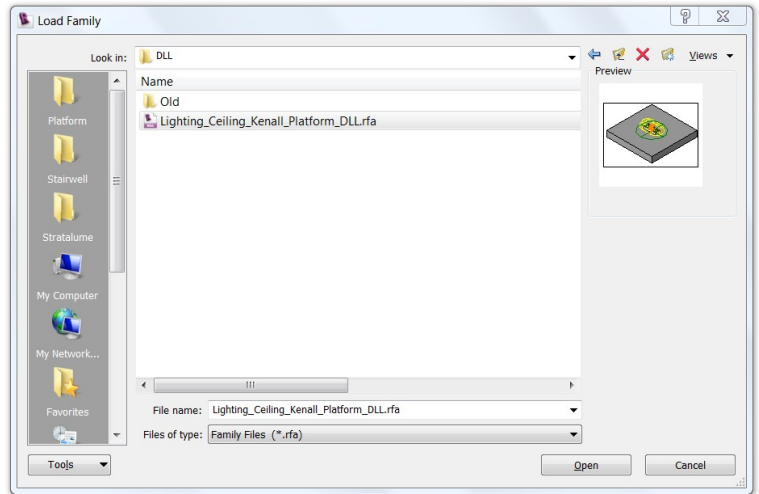



Instructions for Using Kenall Revit® Families

1. Install/unzip all Kenall Revit® files into a common folder.
2. Within a Revit® Project (rvt) go to the pull-down menu: **File/ Load from Library/ Load Family.**
3. Navigate to the directory containing the Kenall Revit® Families.
4. Select Family as required from the **Load Family** Dialog Box and click **Open**. Please note that our Lights must be Loaded via the Specify Types Dialog Box, see image below
5. From the **Specify Types** Dialog Box, moving from left to right Filter out desired Family Types and click **OK**. Note the small Pull-Down Arrows at the bottom right corner of each Parameter. Once the User has filtered down to a single Type, no more Filtering is required. All Kenall Type Filters correspond directly to their Kenall Spec Sheet unless denoted by an X or X/X.

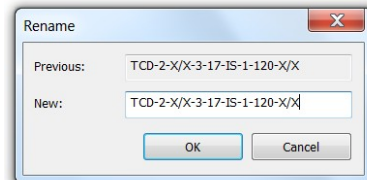


ORDERING INFORMATION

Series	Nominal Size	Hsg./Door Mtrl	Lamp Qty	Lamp Type	Ballast Type	Ballast Qty	Voltage	Lens	Options
TCD		/						/	
Nominal Size		Lamp Type		Voltage		Options			
2	8" x 24"	24" Nominal Length		120	120 Volts	AH	Allen Head fasteners		
4	8" x 48"	17 F17T8		277	277 Volts	PH	Phillips Head fasteners		
Housing/Door Material		40B F40TT		347	347 Volts	EL	Standard Lumen EL Pack		
3	14 Gauge SS (Painted)	48" Nominal Length		Lens (Inner/Outer)		PEL	High Lumen EL Pack		
4	16 Gauge SS (Painted)	32 F32T8		0	No Lens	SEL	Specified EL Pack		
A	18 Gauge SS (Painted)	44 F48T8HO		1	.125" Prismatic Acrylic	FS	Single Fuse & Holder		
6	14 Gauge SS (Brushed)	Ballast Type		2	.125" Prismatic Polycarbonate	KO	Two 1/2" EMT Conduit Entry		
7	16 Gauge SS (Brushed)	IS Instant Start Electronic		3	.125" Textured Polycarbonate	Knockouts (one per end cap)			
B	18 Gauge SS (Brushed)	<10% THD (T8,T8HO)		G	.125" Clear Polycarbonate	FDIH	Field Drilled Installation Holes		
Lamp Qty		RS Rapid Start Electronic		4	.156" Prismatic Polycarbonate	SSIN	Stainless Steel Interior		
1	One	<10% THD (CFL,T8,T8HO)		R	.156" Prismatic Tempered Glass				
2	Two	SB Specified Ballast		6	.187" Prismatic Polycarbonate				
3	Three (F17T8 and F32T8 only)	Ballast Qty		7	.187" Clear Polycarbonate				
		1 One		8	.187" Clear Tempered Glass				
		2 Two		9	.250" Clear Polycarbonate				
				A	.250" Clear Tempered Glass				
				B	.375" Clear Polycarbonate				
				C	.375" Clear Tempered Glass				

6. **Place on Face**  as required. Note that all Kenall Lights are Face Based Families.

7. **Select** the Kenall Element that you just placed and go to the pull-down menu: **Edit/ Properties.**



8. Click the **Edit/ New** Button and **Rename** the Type by replacing all missing Ordering Information (X, X/X). Kenall Light Options can also be added to the New Name of added to the Comments Column of the Revit Light Schedule at a later time.