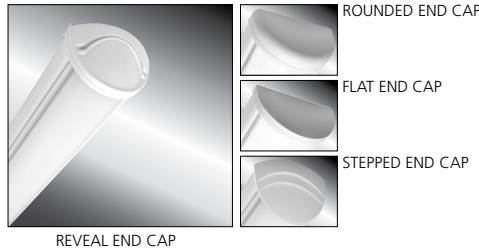


MILLENNIUM STRETCH™

MLHA5 SERIES – INDIVIDUAL

Product Features:

- » Surface mount – ceiling, wall; 5"×24", 36", 48", 72" and 96"
- » Extruded aluminum housing with decorative end caps
- » Low-profile –ADA compliant
- » Peace of Mind Guarantee® against breakage



SPECIFICATIONS:

HOUSING: Marine grade aluminum. Extruded body with die-cast end caps. Housing, with end caps, post assembly TGIC polyester powder coat finished – 5-step pre-treatment. See Ordering Information for standard, optional and custom finishes.

REFLECTOR: Full reflector/wire cover – 92% reflectivity.

LENS: UV-stabilized, high impact extruded clear or pearlescent polycarbonate. Smooth exterior, linear prismatic interior. Nominal thickness .156". Lens securely positioned in body channels and end caps. Lens locked in place with tamper-resistant stainless steel Torx® with center pin fasteners and sealed with closed cell gaskets.

END CAPS: Marine grade die-cast aluminum. Four styles available: Flat, Rounded, Reveal and Stepped. Conduit and "Wiremold"™ ready" knockout visible only from interior of end cap (For Flat and Rounded styles only).

SOCKETS: Shock-resistant sockets with internal locking collar to ensure positive lamp retention.

HARDWARE: Stainless steel, tamper-resistant Torx® with center pin fasteners secure lens in housing body's lens channel (eight on 72" and 96" housings, four on 24", 36" and 48" housings).

ELECTRICAL: LED: Available 3500K, 4000K and 5000K color temperatures, 82 CRI. 120-277VAC and 347VAC, 50/60Hz electrical input with serviceable high power factor electronic, constant-current driver (<20% THD, >0.95 PF). Standard 0-10V dimming with 1-100% range and dim-to-dark capabilities; maximum driver source of 165µA. Optional embedded microwave motion sensor (MS) has factory default settings of 20 minute time out, dims down to 30%. LF: Class P ballasts. Fluorescent electronic 120/277/347 and dual voltage ballasts high power factor.

SENSOR & CONTROLS: Optional sensor available with compatible third party controls. To see the full list of compatible controls, [click here](#).

TEKLINK™ TL50: An independent lighting control system embedded in the luminaire, featuring its own occupancy sensor, daylight harvesting and adjustable time-out/dimming settings.

TEKLINK™ TL100: Centralized, wired zonal occupancy and closed-loop daylight harvesting control system. TL100 controllers are standalone devices and ordered separately for luminaire. [Click here for specifications](#).

INSTALLATION: Standard two-point (24" housing), four-point (36" and 48" housing) and eight-point (72" and 96" housing) mounting required for Peace of Mind Guarantee®. LED product ambient temperature is -30°C to 40°C, unless otherwise noted.

PHOTOMETRICS: Photometry tested to the IESNA LM-79-08 standard by an ILAC/ISO17025 accredited laboratory. For additional photometric data, please go to [www.kenall.com](#).

WARRANTY: Limited ten (10) year warranty for LED Lamps. [Peace of Mind Guarantee against breakage](#).

LISTINGS: Luminaire is certified to UL Standards by Intertek Testing Laboratory for Wet Location – covered ceiling mount. Corner, horizontal wall, vertical wall and pendant mount installation – Damp Location only. ETL certified IP64 in compliance with IEC 60598 – ceiling mount. ADA compliant.

PROJECT INFORMATION	
Job Name	_____
Fixture Type	_____
Catalog Number	_____
Approved by	_____



In Stock SKU
MLHA5-48-F-MW-PP-45L40K-DCC-1-DV
MLHA5-48-R-MW-PP-45L40K-DCC-1-DV

ORDERING INFORMATION (Ex: MLHA5-48-F-MB-PP-45L40K-DCC-DV-FS)

Model	Length	End Cap	Finish	Lens	Lamp Qty	Lamp Type	Ballast/Driver	Circuit Qty	Voltage	Options	Accessories	TekLink	Controls Kit
MLHA5													
Length	2'												
24	2'												
36	3'												
48	4'												
72	Two 3' (factory connected)												
96	Two 4' (factory connected)												
End Caps													
F	Flat												
R	Rounded												
RV	Reveal												
SP	Stepped												
Finish													
LG	Light Gray												
MB	Matte Black												
MW	Matte White												
CC	Custom Color (Consult Factory)												
Lens													
CP	Clear Polycarbonate												
PP	Pearlescent Polycarbonate												
Lamp Quantity (Cross Section)													
1	One												
2	Two												
Lamp Type													
2' Lengths													
25L35K	25 Watt 3500K LED												
25L40K	25 Watt 4000K LED												
25L50K	25 Watt 5000K LED												
3' Lengths													
14	F14T5												
17	F17T8												
24	F24T5HO (120/277V only)												
4' Lengths													
21	F21T5												
25	F25T8												
39	F39T5HO (120/277V only)												
Circuit Quantity													
1	One												
2+	Two												
Voltage													
120	120 Volts												
277	277 Volts												
347	347 Volts												
DV	120-277 Volts												
Options													
EL	500 Minimum Lumen Battery Pack (4' only) (90 Minutes; 32°F Starting Temperature)												
PEL	1100 Minimum Lumen Battery Pack (90 Minutes; 32°F Starting Temperature)												
LEL	Integral 8.4W Emergency Battery Backup (4' length only, 0°C minimum operating temperature, n/a with 347V)												
CDF	Captive Diffuser Fasteners												
DL	Damp Location												
FS	Single Fuse & Holder												
NAT	Natorium Environment Option												
PH	Phillips Head Fasteners												
PM	Pendant Mount (Max. 3/8NPT stems by others; damp only)												
MS	Motion Sensor (2' and 4' LED only) (n/a with 347 Voltage Option)												
Accessories													
CMB	Corner Mount Bracket (Must be ordered with DL Option)												
9500	Torx® Screwdriver												
D-0552	Torx® Driver Bit (Required for CMB Option)												
TekLink													
TL50	TL50 Control System (n/a with 347V) (Click here for specifications)												
TL100	TL100 Control System (Click here for specifications)												
Please consult Kenall Applications when ordering controls. Mounting heights above 14' may require alternate sensing technology.													
Controls Kit													
<	>	Factory Assigned Internal Code											
†	n/a on 2' fixtures with EL option.												
▼	347V n/a with EL or PEL options.												
■	2' Fixtures have minimum 350-450 lumen battery pack. n/a with (2) T5HO lamps.												
●	n/a on 2' fixtures, 3' fixtures with T5 or T8 lamping, or with (2) T5HO lamps.												
‡	n/a with LED												
§	PM and CMB not available in conjunction												
▲	LED only. N/A with MS or CMB options. N/A with 72" or 96" length.												



www.kenall.com | P: 800-4-Kenall | F: 262-891-9701 | 10200 55th Street Kenosha, Wisconsin 53144, USA

This product complies with the Buy American Act: manufactured in the United States with more than 50% of the component cost of US origin. It may be covered by patents found at [www.kenall.com/patents](#). Content of specification sheets is subject to change; please consult [www.kenall.com](#) for current product details. ©2022 Kenall Mfg. Co.

A brand of **legrand**

MILLENIUM STRETCH™

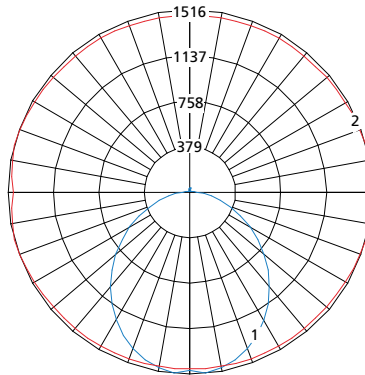
MLHA5 SERIES – INDIVIDUAL

PERFORMANCE

Length	Lamp Type	Initial Delivered Lumens			Drive Current (mA)	Estd. L70 LED Life (Hrs)
		@ 25°C	Efficacy (lm/W)	Input Power (W)		
2'	25L35K	2,374	95	25	100	150,000
	25L40K	2,531	101	25	100	150,000
	25L50K	2,531	101	25	100	150,000
4'	45L35K	4,748	97	49	100	150,000
	45L40K	5,062	103	49	100	150,000
	45L50K	5,062	103	49	100	150,000

Information above is valid for the recommended Type PP lens type and is subject to change without notice. Visit www.kenall.com for IES files and additional information.

Model: MLHA5-48-F-MW-PP-45L40K-DCC-DV

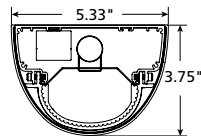


Maximum Candela = 1516 Located At Horizontal Angle = 15, Vertical Angle = 5

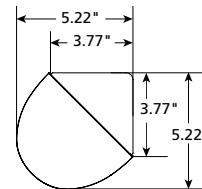
- 1 - Vertical Plane Through Horizontal Angles (15-195) (Through Max. Cd.)
- 2 - Horizontal Cone Through Vertical Angle (5) (Through Max. Cd.)

DIMENSIONAL DATA

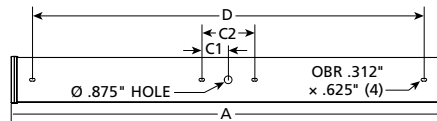
CROSS SECTION/DETAILS



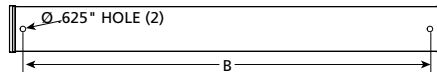
CORNER MOUNT BRACKET



SURFACE MOUNTING HOLES



PM OPTION



Nominal Two Foot Fixture Legend

LMP End Cap	A	B	C1	C2	D
T8/LED R	26.524	22.250	N/A	N/A	20.480
T8/LED F	25.308	22.250	N/A	N/A	20.480
T8/LED SP	28.131	22.250	N/A	N/A	20.480
T8/LED RV	27.674	22.250	N/A	N/A	20.480
T5 R	24.940	20.666	N/A	N/A	18.896
T5 F	23.724	20.666	N/A	N/A	18.896
T5 SP	26.547	20.666	N/A	N/A	18.896
T5 RV	26.090	20.666	N/A	N/A	18.896

Nominal Three Foot Fixture Legend

LMP End Cap	A	B	C1	C2	D
T8/LED R	38.524	34.250	3.000	6.000	32.480
T8/LED F	37.308	34.250	3.000	6.000	32.480
T8/LED SP	40.131	34.250	3.000	6.000	32.480
T8/LED RV	39.674	34.250	3.000	6.000	32.480
T5 R	36.751	32.478	2.953	5.906	30.708
T5 F	35.535	32.478	2.953	5.906	30.708
T5 SP	38.358	32.478	2.953	5.906	30.708
T5 RV	37.901	32.478	2.953	5.906	30.708

Nominal Four Foot Fixture Legend

LMP End Cap	A	B	C1	C2	D
T8/LED R	50.524	46.250	3.000	6.000	44.480
T8/LED F	49.308	46.250	3.000	6.000	44.480
T8/LED SP	52.131	46.250	3.000	6.000	44.480
T8/LED RV	51.674	46.250	3.000	6.000	44.480
T5 R	48.562	44.288	2.953	5.906	42.518
T5 F	47.346	44.288	2.953	5.906	42.518
T5 SP	50.169	44.288	2.953	5.906	42.518
T5 RV	49.712	44.288	2.953	5.906	42.518



www.kenall.com | P: 800-4-Kenall | F: 262-891-9701 | 10200 55th Street Kenosha, Wisconsin 53144, USA

A brand of **legrand**

This product complies with the Buy American Act: manufactured in the United States with more than 50% of the component cost of US origin. It may be covered by patents found at www.kenall.com/patents. Content of specification sheets is subject to change; please consult www.kenall.com for current product details. ©2022 Kenall Mfg. Co.