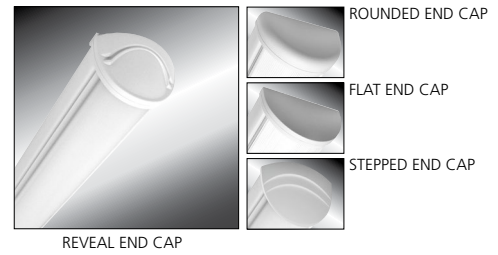


MILLENIUM STRETCH™

MLRS5 SERIES – INDIVIDUAL

PRODUCT FEATURES:

- » 5" linear surface mount luminaire
- » Extruded aluminum housing with decorative end caps
- » Low-profile –ADA compliant
- » Suitable for Damp Location environments



SPECIFICATIONS

HOUSING: Extruded marine grade aluminum body with die-cast aluminum end caps. TGIC polyester powder coat finished – 5-step pre-treatment. See Ordering Information for available finishes.

OPTIC: UV-Stabilized, high-efficiency diffused polycarbonate with smooth exterior and linear prismatic interior. Lens securely positioned in body channels and endcaps, locked into place with concealed tamper-resistant Torx® T-20 with center pin fasteners.

END CAPS: Marine grade die-cast aluminum. Four styles available: Flat, Rounded, Reveal and Stepped. Conduit and "Wiremold™ ready" knockout visible only from interior of end cap (For Flat and Rounded styles only).

HARDWARE: Stainless steel, tamper-resistant Torx® T-20 with center pin fasteners secure lens in housing body's lens channel (four on 48" length; eight on 96" length).

ELECTRICAL: Serviceable mid-power LED array. Minimum 80 CRI standard (R9>0), consult factory for optional 90CRI (R9>50). Maximum three-step MacAdam ellipse variation. See Ordering Information for available color temperature options.

DRIVER: 120-277VAC or 347VAC, 50/60Hz electrical input with serviceable constant-current driver (<20% THD, >0.90 PF). Minimum 85% driver efficiency. Standard 0-10V dimming with 1-100% range and dim-to-dark capabilities; 0.2mA maximum source current.

SENSOR & CONTROLS: Available with compatible third party controls. To see the full list of compatible controls, [click here](#).

INSTALLATION: Surface ceiling, vertical or horizontal wall, corner mount (CMB) or suspended pendant mounting (PM). Standard four-point mounting (eight-point on 96") recommended. Suitable for -30°C to 40°C ambient environments, unless otherwise noted.

WARRANTY: Limited ten (10) year LED warranty.

LISTINGS: Luminaire is certified to UL Standards by Intertek Testing Laboratory for Damp location – corner, horizontal wall, vertical wall and pendant mount installation. See Options for Wet Location – covered ceiling mount. ADA compliant.



ORDERING INFORMATION (Ex: MLRS5-48-R-MW-PP-45L35K-DCC-DV-CDF)

Model	Length	End Cap	Finish	Lens	Lamp Code	Driver Type	Voltage	Options	Accessories
MLRS5				PP		DCC			
	Length			Lens		Driver Type			
	48 4'			PP Pearlescent Polycarbonate		DCC 0-10V Dimming Constant Current			
	96 Two 4' (factory connected)								
	End Caps			Lamp Code		Input Voltage			
	F Flat			45L35K 45 Watt 3500K LED		DV 120-277 VAC, 50/60Hz			
	R Rounded			45L40K 45 Watt 4000K LED		347 347 VAC, 60Hz			
	RV Reveal			45L50K 45 Watt 5000K LED					
	SP Stepped					Options			
	Finish					LEL Integral 10W Emergency Battery Backup			
	MW Matte White					(4' length only, 0°C minimum operating temperature, n/a with 347V)			
	MB Matte Black					CDF Captive Diffuser Fasteners			
	LG Light Gray					FS Single Fuse & Holder			
	CC Custom Color (Consult Factory)					PH Phillips Head Fasteners			
						PM § Pendant Mount (max 3/8" NPT stems, by others; n/a with WL option)			
						WL Wet Location Rating (covered ceiling only)			
						Accessories			
						CMB § Corner Mount Bracket (n/a with WL option)			

§ PM and CMB not available in conjunction



MILLENIUM STRETCH™

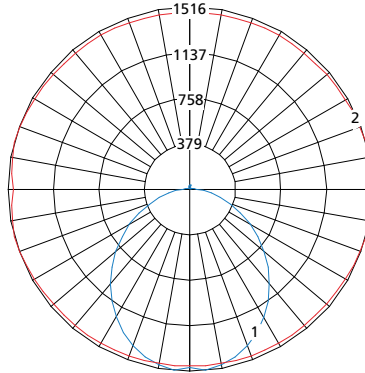
MLR55 SERIES – INDIVIDUAL

PERFORMANCE

Lamp Type	Initial Delivered Lumens		Input Power (W)	Drive Current (mA)	Estd. L70 LED Life (Hrs)
	@ 25°C	Efficacy (lm/W)			
45L35K	4246	85	50	94	150,000
45L40K	4526	90	50	94	150,000
45L50K	4707	94	50	94	150,000

Displayed information is for selected luminaires only. Additional wattages and color temperatures are also available. Visit www.kenall.com for additional information.

Model: MLR55-48-F-MW-PP-45L40K-DCC-DV

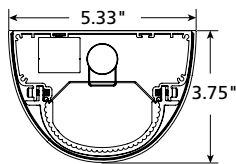


Maximum Candela = 1241 Located At Horizontal Angle = 15, Vertical Angle = 5

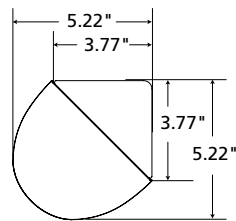
- 1 - Vertical Plane Through Horizontal Angles (15-195) (Through Max. Cd.)
- 2 - Horizontal Cone Through Vertical Angle (5) (Through Max. Cd.)

DIMENSIONAL DATA

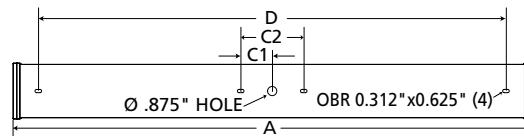
CROSS SECTION/DETAILS



CORNER MOUNT BRACKET



MOUNTING HOLES



PM OPTION



Nominal Four Foot Fixture Legend

End Cap	A	B	C1	C2	D
R	50.52	46.25	3.00	6.00	44.48
F	49.31	46.25	3.00	6.00	44.48
SP	52.13	46.25	3.00	6.00	44.48
RV	51.67	46.25	3.00	6.00	44.48

