

ENVIROPRO™

EPC SERIES

PRODUCT FEATURES:

- » Two point suspended or surface mount – available in 2', 4' and 8' lengths
- » 90 degree rotational aiming, 45 degrees to each side
- » Toolless for easy installation and servicing
- » Uplight option available
- » Meets stringent NEMA 4X hosedown criteria



PROJECT INFORMATION

Job Name _____

Fixture Type _____

Catalog Number _____

Approved by _____

SPECIFICATIONS:

HOUSING: 6-1/2" diameter impact resistant acrylic.

END CAPS: Die formed tumbled finish Type 304 stainless steel.

REFLECTORS: High reflectance formed aluminum.

ELECTRICAL: Fluorescent rapid start electronic ballasts, high power factor (<10% THD). See Ordering Information for optional equipment. Lamps by others. 6' cable and water tight connector standard. Water tight quick disconnect optional.

MAINTENANCE: Removal of one end cap for lamp assembly removal for lamp replacement or ballast maintenance.

INSTALLATION: Two point suspended mounting using cables or chain (by others) or ceiling mount using supplied type 304 stainless steel brackets.

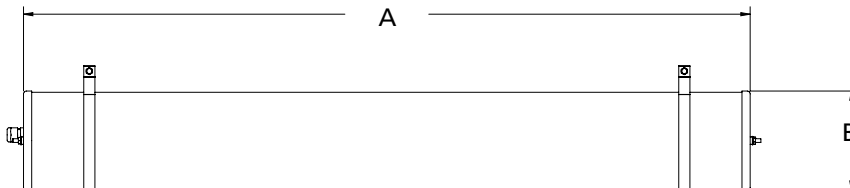
LISTINGS: Luminaire is certified to UL Standards by Intertek Testing Laboratory for Wet Location. ETL certified IP65 per IEC 60598. NSF2 Food Zone/Non-Contact. NEMA 4X rated.



ORDERING INFORMATION (Ex: EPC-48-C-2-32-RS-120)

Model	Length	Mounting	Lamp Qty/Type	Ballast Type	Voltage	Options
EPC						
Nominal Length	Lamp Quantity/Type (cont.)		Lamp Quantity/Type (cont.)		Ballast Type	
24 2'	4' Length		8' Length		IS Instant Start Ballast (T8 lamps only)	
48 4'	1-28 One F28T5		2-28 Two F28T5		RS Rapid Start Electronic <10% THD (T5, T5HO, T8, T8HO)	
96 8'	2-28 Two F28T5		4-28 Four F28T5		SB Specified Ballast	
	3-28 Three F8T5 (2 down, 1 up)		6-28 Six F28T5 (4 down, 2 up)			
Mounting Style	1-32 One F32T8		2-32 Two F32T8		Voltage	
C Suspended	2-32 Two F32T8		4-32 Four F32T8		120 120 Volts	
S* Surface	3-32 Three F32T8 (2 down, 1 up)		6-32 Six F32T8 (4 down, 2 up)		277 277 Volts	
	1-48 One F48T8HO		2-48 Two F48T8HO		347 347 Volts	
Lamp Quantity/Type	2-48 Two F48T8HO		4-48 Four F48T8HO		DV 120-277 Volts	
2' Length	1-54 One F54T5HO		1-96 One F96T8HO			
1-14 One F14T5	2-54 Two F54T5HO		2-96 Two F96T8HO		Options	
2-14 Two F14T5	3-54 Three F54T5HO (2 down, 1 up)		2-54 Two F54T5HO		AMEC Antimicrobial Finish CRS End Caps	
1-17 One F17T8	1-54A One F54T5HO amalgam		4-54 Four F54T5HO		EL Standard lumen one lamp EL pack (n/a for 347V or uplight option)	
2-17 Two F17T8	2-54A Two F54T5HO amalgam		6-54 Six F54T5HO (4 down, 2 up)		FS Fuse & Holder	
1-24 One F24T5HO	3-54A Three F54T5HO amalgam (2 down, 1 up)		2-54A Two F54T5HO amalgam		QCC Quick Disconnect Connector	
2-24 Two F24T5HO			4-54A Four F54T5HO amalgam		C-3578 F54T5HO Coated/Sealed AMALGAM lamps	
			6-54A Six F54T5HO amalgam (4 down, 2 up)			

DIMENSIONAL DATA



DIMENSIONAL DATA (IN INCHES)

	A	B
2'	24.75	6.67
4'	48.75	6.67
8'	96.75	6.67

*NOTE: For surface mounting style, the distance from the mounting surface to the top of the fixture is 7.50".



www.kenall.com

P: 800-4-Kenall

F: 262-891-9701

10200 55th Street Kenosha, Wisconsin 53144

When you see this image, you will know the Kenall product shown or described is designed and manufactured in the USA with components purchased from US suppliers, and meets the Buy American requirements under the ARRA. Kenall has not determined the origin of its domestically purchased components or the subcomponents thereof. May be covered by patents found at www.kenall.com/patents. Content of specification sheets is subject to change; please consult www.kenall.com for current product details. © 2015 Kenall Mfg. Co. All rights reserved.